

LEA Name : Loyalsock Township SD
Address : 1605 Four Mile Drive
Williamsport, PA 17701

County : Lycoming
AUN Number : 117414203
LEA Type : SD

REVISED SUBMISSION

Annual Financial Report Accuracy Certification Statement

For Fiscal Year Ending

6/30/2018

Pennsylvania Department of Education
&

Office of Comptroller Operations


PDE-2056: Intermediate Unit

PDE-2057: School District, AVTS/CTC, Charter School,
and Special Program Jointure

CERTIFICATION: By signing this page I agree that the electronic data submitted is a complete and accurate statement of the financial operations and status of the local education agency for the fiscal year. It has been prepared in accordance with generally accepted accounting principles and established Commonwealth of PA reporting guidelines.



Chief School Administrator Signature



Board Secretary Signature

Date

3-1-19

Date

3-1-19

Maurice D Egly

Contact Person

degly@ltsd.k12.pa.us

Contact Person E-mail Address

(570)326-6508

Contact Person Telephone Number

(570)326-0770

Contact Person Fax Number

Ext :1004

Audit Certification

Annual Financial Report:

For Fiscal Year Ending 6/30/2018

(Pursuant to PA School Code Section 218(b))

LEA Name : Loyalsock Township SD
AUN Number : 117414203
County : Lycoming

REVISED SUBMISSION

Audit Certification Due:
12/31/2018

This certification is applicable to the Annual Financial Report data submitted through the Consolidated Financial Reporting System on: 3-1-19 Date

Auditing Firm:

Larson, Kellett & Associates, P.C.

40 Choate Circle

Montoursville , PA , 17754-

Auditor Contact Name: Brian Larson

Auditor Phone: (570)368-2941

Auditor E-mail: brian@larsonkellett.com

Page 2

CERTIFICATION: By signing this page I agree that the financial statements of the school have been properly audited as noted above pursuant to Article XXIV, and in the auditor's professional opinion, the Annual Financial Report (PDE-2057) submitted on the date referenced is materially consistent with the audited financial statements.

Chief School Administrator


Signature

3-1-19 Date

Maurice D Egly

Contact Person

degly@tsd.k12.pa.us

Contact Person E-mail Address

Board Secretary


Signature

3-1-19 Date

(570)326-6508 Ext :1004

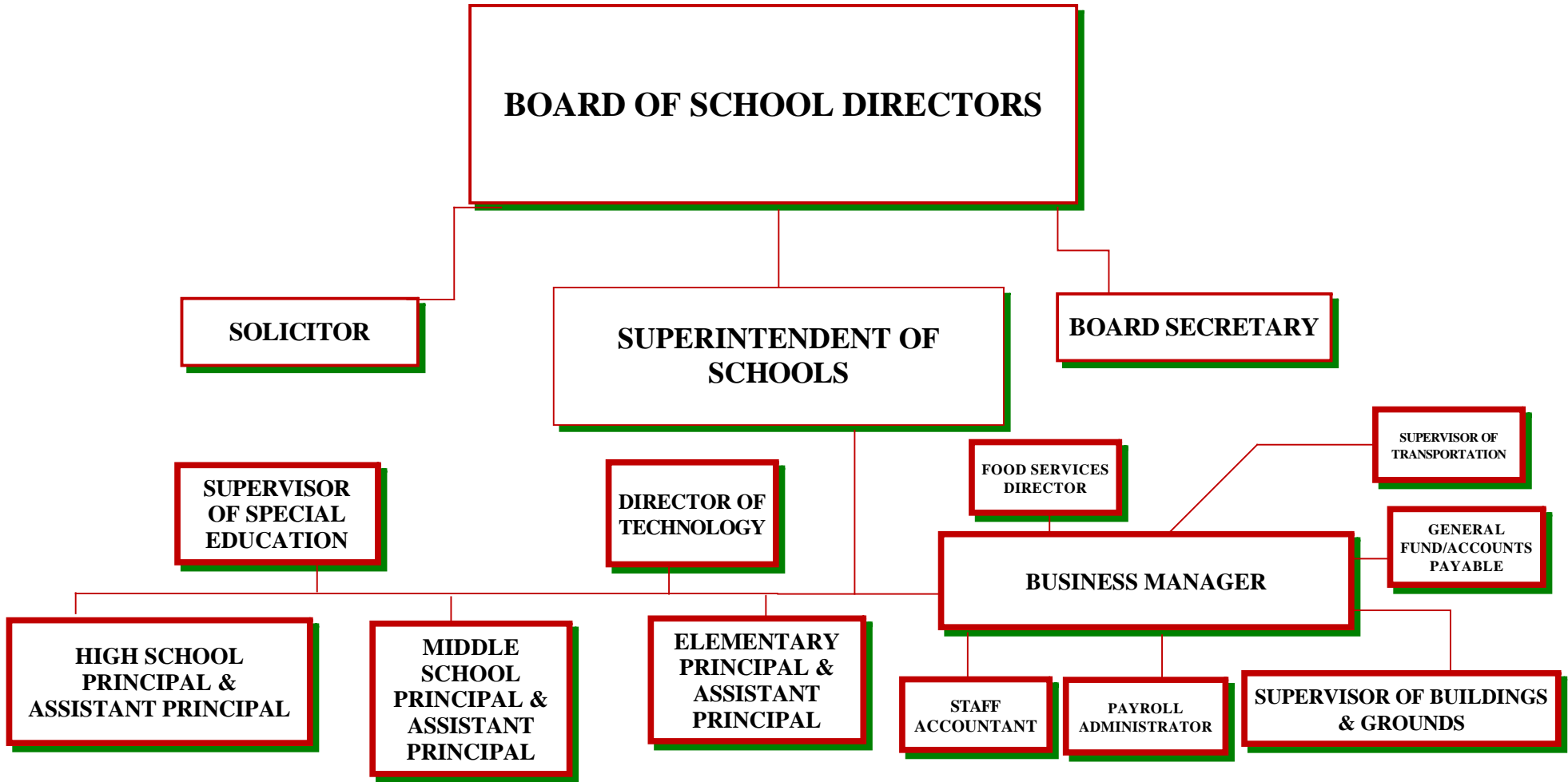
Contact Person Telephone Number

(570)326-0770

Contact Person Fax Number

LOYALSOCK TOWNSHIP SCHOOL DISTRICT

**Organizational Chart
2017-2018**



REVISED SUBMISSION

<u>Val Number</u>	<u>Description</u>	<u>Justification</u>
16230	<p>REP Fund 51 – Net Position - Beginning of Fiscal Year must equal Prior Year AFR, Net Position - End of Year. Justifications to this error must fully explain the situation that prompted a fund balance restatement. "Auditor Adjustment" is not a sufficient justification.</p> <p>REP Fund 51 – Net Position - Beginning of Fiscal Year: \$-192,612.00 REP Fund 51, Prior Year AFR, Net Position - End of Year: \$-151,133.00</p>	The fund balance restatement was due to the implementation of GASB 75.
30501	<p>Revenue Detail: AFR amount must equal or exceed PDE FAI System amount.</p> <p>7311, AFR Rev Detail: \$124,143.84 7311, PDE FAI System: \$131,433.42</p>	The difference of \$7,289.58 was received and recognized in 2018-2019.
41005	<p>Expenditures have been reported in Function 1700 – Higher Education Programs for Secondary Students. Please confirm that these costs were for services provided to your school's secondary students. NOTE: Adult education programs and Community College sponsorship should be coded to Function 1600.</p> <p>Exp detail, Fund 10, Function 1700 total \$500.00</p>	This is a fee for a Co-op partnership agreement we have with the Pennsylvania College of Technology.

Amounts Expressed in Whole Dollars

	<u>General Fund</u> <u>(10)</u>	<u>Public Purpose Trust</u> <u>(27)</u>	<u>Other Compt Approved</u> <u>(28)</u>	<u>Athletic / Activity</u> <u>(29)</u>	<u>Capital Reserve (690.</u> <u>1850)</u> <u>(31)</u>
Assets And Deferred Outflows Of Resources					
Assets					
0100 Cash and Cash Equivalents	7,972,883				
0110 Investments	508,543				
0120 Taxes Receivable	276,893				
0130 Due From Other Funds	74,366				
0141 Due From Other Governments	385,322				
0142 State Revenue Receivable	466,038				
0143 Federal Revenue Receivable	37,593				
0145 Other Intergovernmental Revenue Receivable					
0146 Due from Primary Government					
0147 Due from Component Unit					
0150 Other Receivables	6,941				
0170 Inventories					
0180 Prepaid Expenses (Expenditures)	210,778				
0190 Other Current Assets					
Total Assets	\$9,939,357				
0910 Deferred Outflows of Resources					
Total Assets And Deferred Outflows Of Resources	\$9,939,357				

REVISED SUBMISSION

Amounts Expressed in Whole Dollars

	<u>Capital Reserve (1431)</u> <u>(32)</u>	<u>Other Capital Projects</u> <u>Fund</u> <u>(39)</u>	<u>Debt Service</u> <u>(40)</u>	<u>Permanent</u> <u>(90)</u>	<u>Total Governmental</u> <u>Funds</u>
Assets And Deferred Outflows Of Resources					
Assets					
0100 Cash and Cash Equivalents	835,685	197,690			9,006,258
0110 Investments					508,543
0120 Taxes Receivable					276,893
0130 Due From Other Funds					74,366
0141 Due From Other Governments					385,322
0142 State Revenue Receivable					466,038
0143 Federal Revenue Receivable					37,593
0145 Other Intergovernmental Revenue Receivable					
0146 Due from Primary Government					
0147 Due from Component Unit					
0150 Other Receivables					6,941
0170 Inventories					
0180 Prepaid Expenses (Expenditures)					210,778
0190 Other Current Assets					
Total Assets	\$835,685	\$197,690			\$10,972,732
0910 Deferred Outflows of Resources					
Total Assets And Deferred Outflows Of Resources	\$835,685	\$197,690			\$10,972,732

Amounts Expressed in Whole Dollars

	<u>General Fund</u> <u>(10)</u>	<u>Public Purpose Trust</u> <u>(27)</u>	<u>Other Compt Approved</u> <u>(28)</u>	<u>Athletic / Activity</u> <u>(29)</u>	<u>Capital Reserve (690.</u> <u>1850)</u> <u>(31)</u>
Liabilities And Deferred Inflows Of Resources And Fund Balances					
Liabilities					
0400 Due to Other Funds	54,860				
0411 Due to Other Governments	450,340				
0412 Due to Primary Government					
0413 Due to Component Unit					
0420 Accounts Payable	83,120				
0430 Contracts Payable					
0440 Current Portion of Long-Term Debt					
0450 Short-Term Payables					
0461 Accrued Salaries and Benefits	2,155,224				
0462 Payroll Deductions and Withholding	62,363				
0480 Unearned Revenues					
0490 Other Current Liabilities	46,917				
Total Liabilities	\$2,852,824				
0950 Deferred Inflows of Resources	243,812				
Fund Balances					
0810 Nonspendable Fund Balance	210,778				
0820 Restricted Fund Balance					
0830 Committed Fund Balance	2,995,000				
0840 Assigned Fund Balance	634,295				
0850 Unassigned Fund Balance	3,002,648				
Total Fund Balances	\$6,842,721				
Total Liabilities, Deferred Inflows Of Resources And Fund Balances	\$9,939,357				

REVISED SUBMISSION

Amounts Expressed in Whole Dollars

	<u>Capital Reserve (1431)</u> <u>(32)</u>	<u>Other Capital Projects</u> <u>Fund</u> <u>(39)</u>	<u>Debt Service</u> <u>(40)</u>	<u>Permanent</u> <u>(90)</u>	<u>Total Governmental</u> <u>Funds</u>
Liabilities And Deferred Inflows Of Resources And Fund Balances					
Liabilities					
0400 Due to Other Funds					54,860
0411 Due to Other Governments					450,340
0412 Due to Primary Government					
0413 Due to Component Unit					
0420 Accounts Payable		500			83,620
0430 Contracts Payable					
0440 Current Portion of Long-Term Debt					
0450 Short-Term Payables					
0461 Accrued Salaries and Benefits					2,155,224
0462 Payroll Deductions and Withholding					62,363
0480 Unearned Revenues					
0490 Other Current Liabilities					46,917
Total Liabilities		\$500			\$2,853,324
0950 Deferred Inflows of Resources					243,812
Fund Balances					
0810 Nonspendable Fund Balance					210,778
0820 Restricted Fund Balance	835,685	197,190			1,032,875
0830 Committed Fund Balance					2,995,000
0840 Assigned Fund Balance					634,295
0850 Unassigned Fund Balance					3,002,648
Total Fund Balances	\$835,685	\$197,190			\$7,875,596
Total Liabilities, Deferred Inflows Of Resources And Fund Balances	\$835,685	\$197,690			\$10,972,732

REVISED SUBMISSION

Amounts Expressed in Whole Dollars	<u>General Fund</u> <u>(10)</u>	<u>Public Purpose Trust</u> <u>(27)</u>	<u>Other Compt Approved</u> <u>(28)</u>	<u>Athletic / Activity</u> <u>(29)</u>	<u>Capital Reserve (690.</u> <u>1850)</u> <u>(31)</u>
Revenues					
6000 Revenue from Local Sources	15,401,453				
7000 Revenue from State Sources	6,778,119				
8000 Revenue from Federal Sources	293,613				
Total Revenues	\$22,473,185				
Expenditures					
1000 Instruction	12,968,767				
2000 Support Services	6,191,356				
3000 Operation of Non-Instructional Services	647,999				
4000 Facilities Acquisition, Construction and Improvement Services					
5110 Debt Service	247,967				
5130 Refund of Prior Year Revenues / Receipts	(64)				
Total Expenditures	\$20,056,025				
Excess (Deficiency) Of Revenues Over Expenditures	\$2,417,160				
Other Financing Sources (Uses)					
9110 Face Value of Bonds Issued					
9120 Proceeds from Refunding of Bonds					
9130 Bond Premiums					
9200 Proceeds from Extended-Term Financing	5,386				
9300 Interfund Transfers - IN					
9400 Sale of or Compensation for Loss of Fixed Assets					
9710 Transfers from Component Units					
9720 Transfers from Primary Governments					
9910 Other Financing Sources Not Listed in the 9000 Series					
9990 Insurance Recoveries					
5120 Debt Service – Refunded Bonds					
5150 Bond Discounts					
5200 Interfund Transfers – Out	2,729,448				
5300 Transfers Out to Component Units/Primary Governments					
Total Other Financing Sources (Uses)	(\$2,724,062)				

REVISED SUBMISSION

Amounts Expressed in Whole Dollars	<u>Capital Reserve (1431)</u> <u>(32)</u>	<u>Other Capital Projects</u> <u>Fund</u> <u>(39)</u>	<u>Debt Service</u> <u>(40)</u>	<u>Permanent</u> <u>(90)</u>	<u>Total Governmental</u> <u>Funds</u>
Revenues					
6000 Revenue from Local Sources	9,136	54,294			15,464,883
7000 Revenue from State Sources					6,778,119
8000 Revenue from Federal Sources					293,613
Total Revenues	\$9,136	\$54,294			\$22,536,615
Expenditures					
1000 Instruction					12,968,767
2000 Support Services	29,619		114,606		6,335,581
3000 Operation of Non-Instructional Services		51,461			699,460
4000 Facilities Acquisition, Construction and Improvement Services	585,644	342,972			928,616
5110 Debt Service			2,245,919		2,493,886
5130 Refund of Prior Year Revenues / Receipts					(64)
Total Expenditures	\$615,263	\$394,433	\$2,360,525		\$23,426,246
Excess (Deficiency) Of Revenues Over Expenditures	(\$606,127)	(\$340,139)	(\$2,360,525)		(\$889,631)
Other Financing Sources (Uses)					
9110 Face Value of Bonds Issued					
9120 Proceeds from Refunding of Bonds			7,375,000		7,375,000
9130 Bond Premiums			96,076		96,076
9200 Proceeds from Extended-Term Financing					5,386
9300 Interfund Transfers - IN	500,000		2,229,448		2,729,448
9400 Sale of or Compensation for Loss of Fixed Assets					
9710 Transfers from Component Units					
9720 Transfers from Primary Governments					
9910 Other Financing Sources Not Listed in the 9000 Series					
9990 Insurance Recoveries					
5120 Debt Service – Refunded Bonds			7,340,000		7,340,000
5150 Bond Discounts					
5200 Interfund Transfers – Out					2,729,448
5300 Transfers Out to Component Units/Primary Governments					
Total Other Financing Sources (Uses)	\$500,000		\$2,360,524		\$136,462

REVISED SUBMISSION

Amounts Expressed in Whole Dollars

	<u>General Fund</u> <u>(10)</u>	<u>Public Purpose Trust</u> <u>(27)</u>	<u>Other Compt Approved</u> <u>(28)</u>	<u>Athletic / Activity</u> <u>(29)</u>	<u>Capital Reserve</u> <u>(690.</u> <u>1850)</u> <u>(31)</u>
Special And Extraordinary Items					
9920 Special Items – Gains					
9930 Extraordinary Items – Gains					
5520 Special Items – Losses					
5530 Extraordinary Items – Losses					
Net Change In Fund Balances	(\$306,902)				
Fund Balance					
0001 Fund Balance - Beginning of Fiscal Year	7,149,623				
Fund Balance - End Of Year	\$6,842,721				

REVISED SUBMISSION

Amounts Expressed in Whole Dollars	<u>Capital Reserve (1431)</u> <u>(32)</u>	<u>Other Capital Projects</u> <u>Fund</u> <u>(39)</u>	<u>Debt Service</u> <u>(40)</u>	<u>Permanent</u> <u>(90)</u>	<u>Total Governmental</u> <u>Funds</u>
Special And Extraordinary Items					
9920 Special Items – Gains					
9930 Extraordinary Items – Gains					
5520 Special Items – Losses					
5530 Extraordinary Items – Losses					
Net Change In Fund Balances	(\$106,127)	(\$340,139)	(\$1)		(\$753,169)
Fund Balance					
0001 Fund Balance - Beginning of Fiscal Year	941,811	537,329			8,628,763
Fund Balance - End Of Year	\$835,684	\$197,190	(\$1)		\$7,875,594

REVISED SUBMISSION

Amounts Expressed in Whole Dollars

	<u>Food Service</u> <u>(51)</u>	<u>Child Care</u> <u>Operations</u> <u>(52)</u>	<u>Other Enterprise</u> <u>(58)</u>	<u>TOTAL</u>	<u>Internal Service</u> <u>(60)</u>
Assets And Deferred Outflows Of Resources					
Current Assets					
0100 Cash and Cash Equivalents	515,714			515,714	
0110 Investments					
0130 Due From Other Funds	54,860			54,860	
0141 Due From Other Governments	4,949			4,949	
0142 State Revenue Receivable					
0143 Federal Revenue Receivable					
0146 Due from Primary Government					
0147 Due from Component Unit					
0150 Other Receivables					
0170 Inventories	2,347			2,347	
0180 Prepaid Expenses (Expenditures)					
0190 Other Current Assets					
Total Current Assets	\$577,870			\$577,870	
Noncurrent Assets					
0211 Land					
0212 Site Improvements (Net)					
0220 Buildings and Building Improvements (Net)					
0230 Machinery, Equipment and Furniture (Net)	200,068			200,068	
0250 Construction in Progress					
0260 Long Term Prepayments					
0290 Other Noncurrent Assets					
Total Noncurrent Assets	\$200,068			\$200,068	
0910 Deferred Outflows of Resources	161,233			161,233	
Total Assets And Deferred Outflows Of Resources	\$939,171			\$939,171	

Amounts Expressed in Whole Dollars	<u>Food Service</u> <u>(51)</u>	<u>Child Care</u> <u>Operations</u> <u>(52)</u>	<u>Other Enterprise</u> <u>(58)</u>	<u>TOTAL</u>	<u>Internal Service</u> <u>(60)</u>
Liabilities And Deferred Inflows Of Resources And Net Position					
Current Liabilities					
0400 Due to Other Funds	74,366			74,366	
0411 Due to Other Governments					
0413 Due to Component Unit					
0420 Accounts Payable	4			4	
0430 Contracts Payable					
0440 Current Portion of Long-Term Debt	639			639	
0450 Short-Term Payables					
0461 Accrued Salaries and Benefits	1,690			1,690	
0462 Payroll Deductions and Withholding					
0480 Unearned Revenues	15,425			15,425	
0490 Other Current Liabilities					
Total Current Liabilities	\$92,124			\$92,124	
Noncurrent Liabilities					
0510 Bonds Payable					
0520 Extended-Term Financing Agreements Payable					
0530 Lease-Purchase Obligations	1,289			1,289	
0540 Accumulated Compensated Absences	11,720			11,720	
0550 Authority Lease Obligations					
0560 Other Post-Employment Benefits (OPEB)	40,041			40,041	
0570 Net Pension Liability	970,789			970,789	
0599 Other Noncurrent Liabilities					
Total Noncurrent Liabilities	\$1,023,839			\$1,023,839	
Total Liabilities	\$1,115,963			\$1,115,963	
0950 Deferred Inflows of Resources	33,095			33,095	
Net Position					
0791 Net Investment in Capital Assets	198,140			198,140	
0008 Restricted Net Position (0792 – 0798)					
0799 Unrestricted Net Position	(408,027)			(408,027)	
Total Net Position	(\$209,887)			(\$209,887)	
Total Liabilities And Deferred Inflows Of Resources And Net Position	\$939,171			\$939,171	

REVISED SUBMISSION

Amounts Expressed in Whole Dollars	<u>Food Service</u> <u>(51)</u>	<u>Child Care Operations</u> <u>(52)</u>	<u>Other Enterprise</u> <u>(58)</u>	<u>TOTAL</u>	<u>Internal Service</u> <u>(60)</u>
Operating Revenues					
6600 Food Service Revenue	503,356			503,356	
0071 Charges for Services					
0072 Other Operating Revenue					
Total Operating Revenues	\$503,356			\$503,356	
Operating Expenses					
100 Personnel Services – Salaries	308,565			308,565	
200 Personnel Services – Employee Benefits	195,087			195,087	
300 Purchased Professional and Technical Services					
400 Purchased Property Services	4,520			4,520	
500 Other Purchased Services	3,279			3,279	
600 Supplies	499,329			499,329	
740 Depreciation	50,855			50,855	
810 Dues and Fees	2,087			2,087	
890 Miscellaneous Expenditures					
Total Operating Expenses	\$1,063,722			\$1,063,722	
Operating Income (Loss)	(\$560,366)			(\$560,366)	
Non Operating Revenues (Expenses)					
6500 Earnings on Investments	4,976			4,976	
6920 Contributions and Donations from Private Sources					
6930 Gains or Losses on Sale of Fixed Assets					
6991 Refunds of a Prior Year Expenditure					
7000 Revenue from State Sources	82,177			82,177	
8000 Revenue from Federal Sources	455,938			455,938	
820 Claims and Judgments Against the LEA					
830 Interest					
TOTAL Non Operating Revenues (Expenses)	\$543,091			\$543,091	
Income (Loss) Before Contributions And Transfers	(\$17,275)			(\$17,275)	

REVISED SUBMISSION

Amounts Expressed in Whole Dollars	<u>Food Service</u> <u>(51)</u>	<u>Child Care Operations</u> <u>(52)</u>	<u>Other Enterprise</u> <u>(58)</u>	<u>TOTAL</u>	<u>Internal Service</u> <u>(60)</u>
Contributions, Transfers, and Special and Extraordinary Items					
5200 Interfund Transfers – Out					
5300 Transfers Out to Component Units/Primary Governments					
5520 Special Items – Losses					
5530 Extraordinary Items – Losses					
9300 Interfund Transfers - IN					
9500 Capital Contributions					
9700 Transfers IN From Component Units/Primary Governments					
9920 Special Items – Gains					
9930 Extraordinary Items – Gains					
Change In Net Position	(\$17,275)			(\$17,275)	
0002 Net Position - Beginning of Fiscal Year	(192,612)			(192,612)	
0003 Accounting Changes / Residual Equity Transfers					
Net Position - End Of Year	(\$209,887)			(\$209,887)	

Amounts Expressed in Whole Dollars	<u>Food Service</u> <u>(51)</u>	<u>Child Care Operations</u> <u>(52)</u>	<u>Other Enterprise</u> <u>(58)</u>	<u>TOTAL</u>	<u>Internal Service(60)</u>
Cash Flows From Operating Activities					
0011 Cash Receipts From Users	503,278			503,278	
0012 Cash Receipts From Assessments Made to Other Funds					
0013 Cash Receipts From Earnings on Investments					
0014 Cash Receipts From Other Operating Revenue					
0015 Cash Payments To Employees For Services	463,668			463,668	
0016 Cash Payments For Insurance Claims					
0017 Cash Payments To Suppliers For Goods and Services	450,412			450,412	
0018 Cash Payments For Other Operating Expenses	3,067			3,067	
Net Cash Provided By (Used For) Operating Activities	(\$413,869)			(\$413,869)	
Cash Flows From Non-Capital Financing Activities					
0021 Receipts From Local Sources - 6000					
0022 Receipts From State Sources - 7000	77,132			77,132	
0023 Receipts From Federal Sources -8000	406,848			406,848	
0024 Notes and Loans Received (Repaid)	(577)			(577)	
0025 Interest Paid on Notes/Loans - 5100-830					
0026 Operating Transfers In (Out)/Residual Equity Trans					
0027 Operating Transfers In (Out) Primary Government / Comp Unit					
0028 Receipts From Refund of Prior Year Expenditures - 6991					
0029 Special and Extraordinary Gains (losses)					
0030 Receipts from Insurance Recoveries -9990					
Net Cash Prov By (Used for) Non-Capital Financing Activities	\$483,403			\$483,403	
Cash Flows From Capital and Related Financing Activities					
0031 Payments For Fac Acq, Const, and Imp - 4000	(1,737)			(1,737)	
0032 Gain / (Loss) on Sale of Fixed Assets - 6930					
0033 Proceeds From Extended Term Financing - 9200					
0034 Principal Paid on Financing Agreements					
0035 Interest Paid on Financing Agreements - 5100-830					
0036 (Inc) Dec in Contributed Capital					
Net Cash Prov By (Used for) Capital and Related Financing Activities	(\$1,737)			(\$1,737)	
Cash Flows From Investing Activities					
0041 Earnings on Investments - 6500	4,976			4,976	
0042 Purchase of Inv Securities / Deposits to Inv Pools					
0043 Receipts From Investment Pool Withdrawals					
0044 Proceeds from Sale and Maturity of Inv Securities					

0045 Loans Received (Paid)

Net Cash Prov By (Used for) Investing Activities	\$4,976	\$4,976
---	----------------	----------------

	<u>Food Service</u> <u>(51)</u>	<u>Child Care Operations</u> <u>(52)</u>	<u>Other Enterprise</u> <u>(58)</u>	<u>TOTAL</u>	<u>Internal Service</u> <u>(60)</u>
Net Increase (Decrease) in Cash Flows	72,773			72,773	
0004 Cash and Cash Equivalents Beginning of Year	442,941			442,941	
Cash and Cash Equivalents at Year End	\$515,714			\$515,714	
<hr/>					
Reconciliation of Operating Income (Loss) To Net Cash Provided by (Used For) Operating Activities					
0005 Operating Income (Loss) per REP	(560,366)			(560,366)	
Adjustments					
0051 Depreciation and Net Amortization	143,525			143,525	
0052 Provision for Uncollectible Accounts					
0053 Other Adjustments	57,266			57,266	
Effect of Changes in Assets, Liabilities, Deferred Outflows and Deferred Inflows					
0054 (Inc) Dec In Accounts Receivable (0120-0150)	10,670			10,670	
0055 Advances to Other Funds (0160)					
0056 (Inc) Dec in Inventories (0170)	561			561	
0057 (Inc) Dec in Prepaid Expenses (0180)					
0058 (Inc) Dec in Other Current or Noncurrent Assets					
0064 Deferred Outflows (0910)	(60,820)			(60,820)	
0059 Inc (Dec) in Accounts Payable (0400-0450)	(952)			(952)	
0060 Inc (Dec) in Accrued Salaries/Benefits (0461)	(1,871)			(1,871)	
0065 Inc (Dec) in Net Pension Liabilities (0570)	(33,824)			(33,824)	
0066 Inc (Dec) in Other Postemp Benefit Oblig (0560)	(3,611)			(3,611)	
0061 Inc (Dec) in Payroll Deductions/Withholding (0462)					
0062 Inc (Dec) in Unearned Revenue (0480)	(5)			(5)	
0063 Inc (Dec) in Other Current or Noncurrent Liabilities	11,720			11,720	
0067 Deferred Inflows (0950)	23,838			23,838	
Total Adjustments	\$146,497			\$146,497	
Cash Provided By (Used for) Total	(\$413,869)			(\$413,869)	

COMBINED STATEMENT OF CASH FLOWS
SCHEDULE OF NONCASH INVESTING, CAPITAL, AND FINANCING ACTIVITIES

Explanation of Transaction and Balance Sheet Effect	Amount
Total	

LEA : 117414203 Loyalsock Township SD

Printed 3/1/2019 2:33:27 PM

REVISED SUBMISSION

Page - 1 of 4

Amounts Expressed in Whole Dollars	<u>Private Purpose Trust</u> <u>(71)</u>	<u>Investment Trust</u> <u>(72)</u>	<u>Pension Trust</u> <u>(73)</u>	<u>Activity</u> <u>(81)</u>
Assets And Deferred Outflows Of Resources				
Assets				
0100 Cash and Cash Equivalents	65,231			99,511
0110 Investments				
0130 Due From Other Funds				
0147 Due from Component Unit				
0150 Other Receivables	97			
0170 Inventories				
0180 Prepaid Expenses (Expenditures)				
0190 Other Current Assets				
0220 Buildings and Building Improvements (Net)				
0230 Machinery, Equipment and Furniture (Net)				
Total Assets	\$65,328			\$99,511
0910 Deferred Outflows of Resources				
Total Assets And Deferred Outflows Of Resources	\$65,328			\$99,511

LEA : 117414203 Loyalsock Township SD

Printed 3/1/2019 2:33:27 PM

REVISED SUBMISSION

Amounts Expressed in Whole Dollars

Assets And Deferred Outflows Of Resources

Assets

	<u>Other Agency</u> <u>(89)</u>	<u>Discrete Component Units</u> <u>(98)</u>	<u>Discrete Component Units</u> <u>(99)</u>	<u>Total Fiduciary Funds</u>
0100 Cash and Cash Equivalents				164,742
0110 Investments				
0130 Due From Other Funds				
0147 Due from Component Unit				
0150 Other Receivables				97
0170 Inventories				
0180 Prepaid Expenses (Expenditures)				
0190 Other Current Assets				
0220 Buildings and Building Improvements (Net)				
0230 Machinery, Equipment and Furniture (Net)				
Total Assets				\$164,839
0910 Deferred Outflows of Resources				
Total Assets And Deferred Outflows Of Resources				\$164,839

LEA : 117414203 Loyalsock Township SD

Printed 3/1/2019 2:33:27 PM

REVISED SUBMISSION

Amounts Expressed in Whole Dollars

	<u>Private Purpose Trust</u> (71)	<u>Investment Trust</u> (72)	<u>Pension Trust</u> (73)	<u>Activity</u> (81)
Liabilities, Deferred Inflows Of Resources And Net Position				
Liabilities				
0400 Due to Other Funds				
0411 Due to Other Governments				
0412 Due to Primary Government				
0413 Due to Component Unit				
0420 Accounts Payable				2,227
0430 Contracts Payable				
0450 Short-Term Payables				
0461 Accrued Salaries and Benefits				
0462 Payroll Deductions and Withholding				
0480 Unearned Revenues				
0490 Other Current Liabilities				97,284
Total Liabilities				\$99,511
0950 Deferred Inflows of Resources				
Net Position				
0791 Net Investment in Capital Assets				
0009 Restricted Net Position (0792 – 0798)	65,328			
0799 Unrestricted Net Position				
Total Net Position	\$65,328			
Total Liabilities, Deferred Inflows Of Resources And Net Position	\$65,328			\$99,511

LEA : 117414203 Loyalsock Township SD

Printed 3/1/2019 2:33:27 PM

REVISED SUBMISSION

Amounts Expressed in Whole Dollars

	<u>Other Agency</u> (89)	<u>Discrete Component Units</u> (98)	<u>Discrete Component Units</u> (99)	<u>Total Fiduciary Funds</u>
Liabilities, Deferred Inflows Of Resources And Net Position				
Liabilities				
0400 Due to Other Funds				
0411 Due to Other Governments				
0412 Due to Primary Government				
0413 Due to Component Unit				
0420 Accounts Payable				2,227
0430 Contracts Payable				
0450 Short-Term Payables				
0461 Accrued Salaries and Benefits				
0462 Payroll Deductions and Withholding				
0480 Unearned Revenues				
0490 Other Current Liabilities				97,284
Total Liabilities				\$99,511
0950 Deferred Inflows of Resources				
Net Position				
0791 Net Investment in Capital Assets				
0009 Restricted Net Position (0792 – 0798)				65,328
0799 Unrestricted Net Position				
Total Net Position				\$65,328
Total Liabilities, Deferred Inflows Of Resources And Net Position				\$164,839

REVISED SUBMISSION

Amounts Expressed in Whole Dollars	<u>Private Purpose Trust</u> <u>(71)</u>	<u>Investment Trust</u> <u>(72)</u>	<u>Pension Trust</u> <u>(73)</u>	<u>Discrete Component</u> <u>Units</u> <u>(98)</u>	<u>Discrete Component</u> <u>Units</u> <u>(99)</u>	<u>Total Fiduciary</u> <u>Funds</u>
Additions						
0091 Gifts and Contributions	6,897					6,897
0092 Other Additions	132					132
Deductions						
0093 Scholarships Awarded	7,125					7,125
0094 Other Deductions						
Change In Net Position	(\$96)					(\$96)
0006 Net Position – Beginning of Fiscal Year	65,424					65,424
0007 Net Position Held in Trust for Pension Benefits						
Net Position - End of Fiscal Year	\$65,328					\$65,328

	<u>Revenue Reported In Current Year</u>	<u>Current Year Tax Accrual</u>	<u>Prior Year Tax Accrual</u>	<u>Taxes Collected In Current Year</u>
<u>Revenue from Local Sources</u>				
6111 Current Real Estate Taxes	10,161,961.62			10,161,961.62
6112 Interim Real Estate Taxes	55,739.91			55,739.91
6113 Public Utility Realty Taxes	14,834.20			14,834.20
6114 Payments in Lieu of Current Taxes - State / Local	124,286.25			124,286.25
6143 Current Act 511 Local Services Taxes	32,942.51			32,942.51
6151 Current Act 511 Earned Income Taxes	3,147,238.50			3,147,238.50
6153 Current Act 511 Real Estate Transfer Taxes	500,939.51			500,939.51
6155 Current Act 511 Business Privilege Taxes	364,996.22			364,996.22
6411 Delinquent Real Estate Taxes	245,001.48			245,001.48
6452 Delinquent Act 511 Occupation Taxes	1,184.81			1,184.81
6455 Delinquent Act 511 Business Privilege Taxes	42,797.38			42,797.38
6500 Earnings on Investments	90,879.11			
6700 Revenues from LEA Activities	47,650.20			
6810 Revenue from Local Governmental Units	32,000.00			
6821 State Revenue Received from Other Pennsylvania Public LEAs	23,237.51			
6832 Federal IDEA Revenue Received as Pass Through	251,129.00			
6910 Rentals	161,874.12			
6920 Contributions and Donations from Private Sources	25,086.27			
6942 Summer School Tuition	3,200.00			
6944 Receipts from Other LEAs in Pennsylvania - Education	28,316.41			
6991 Refunds of a Prior Year Expenditure	8,150.36			
6999 Other Revenues Not Specified Above	38,007.86			
TOTAL Revenue from Local Sources	\$15,401,453.23			\$14,691,922.39

REVISED SUBMISSION

Revenue Reported
In Current Year

Revenue from State Sources

7110 Basic Education Funding	3,199,202.32		
7160 Tuition for Orphans Subsidy	46,799.71		
7271 Special Education funds for School-Aged Pupils	734,056.40		
7311 Pupil Transportation Subsidy	124,143.84		
7320 Rental and Sinking Fund Payments / Building Reimbursement Subsidy	298,234.83		
7330 Health Services (Medical, Dental, Nurse, Act 25)	26,175.22		
7340 State Property Tax Reduction Allocation	393,645.69		
7505 Ready to Learn Block Grant	139,676.00		
7599 Other State Revenue Not Listed Elsewhere in the 7000 Series	100.00		
7810 State Share of Social Security and Medicare Taxes	339,884.03		
7820 State Share of Retirement Contributions	1,476,201.02		
TOTAL Revenue from State Sources	\$6,778,119.06		

REVISED SUBMISSION

Revenue Reported
In Current Year

Revenue from Federal Sources

8110	Payments for Federally Impacted Areas	3,021.06		
8514	NCLB, Title I - Improving the Academic Achievement of the Disadvantaged	229,375.96		
8515	NCLB, Title II - Preparing, Training and Recruiting High Quality Teachers and Principals	50,481.00		
8517	NCLB, Title IV - 21St Century Schools	10,000.00		
8810	School-Based Access Medicaid Reimbursement Program (SBAP) Reimbursements (Access)	735.36		
TOTAL Revenue from Federal Sources		\$293,613.38		

REVISED SUBMISSION

Revenue Reported
In Current Year

Other Financing Sources

9290 Other Extended-Term Financing Proceeds	5,385.81		
TOTAL Other Financing Sources	\$5,385.81		
TOTAL FROM ALL SOURCES	\$22,478,571.48		\$14,691,922.39

REVISED SUBMISSION

Revenue from Local Sources	15,401,453.23
Revenue from State Sources	6,778,119.06
Revenue from Federal Sources	293,613.38
Other Financing Sources	5,385.81
TOTAL FROM ALL SOURCES	\$22,478,571.48

General Fund (10)

	<u>Total</u>
1000 Instruction	
100 Personnel Services – Salaries	
100 Personnel Services – Salaries	6,436,793.58
Total Personnel Services – Salaries	\$6,436,793.58
200 Personnel Services – Employee Benefits	
210 Group Insurance – Contracted Provider	1,312,054.70
220 Social Security Contributions	470,106.97
230 PSERS Retirement Contributions	2,040,770.48
250 Unemployment Compensation	28,471.23
260 Workers' Compensation	17,963.22
Total Personnel Services – Employee Benefits	\$3,869,366.60
300 Purchased Professional and Technical Services	
310 Official / Administrative Services	550,719.28
322 Professional Educational Services – Ius	1,008,122.55
Total Purchased Professional and Technical Services	\$1,558,841.83
400 Purchased Property Services	
430 Repairs and Maintenance Services	34,729.65
440 Rentals	5,450.82
Total Purchased Property Services	\$40,180.47
500 Other Purchased Services	
510 Student Transportation Services	1,394.25
550 Printing and Binding	729.80
561 Tuition To Other School Districts Within the State	20,449.63
562 Tuition To Pennsylvania Charter Schools	382,340.53
564 Tuition To Career and Technology Centers	215,213.02
566 Tuition To Institutions of Higher Education and Technical Institutes	6,500.00
568 Tuition To Private Residential Rehabilitative Institutions (PRRI) [In-State] and Detention Centers	90,849.29
580 Travel	1,663.29
594 IU Payment By Withholding for Institutionalized Children's Programs – Special Classes	11,601.16
Total Other Purchased Services	\$730,740.97
600 Supplies	
610 General Supplies	153,832.98
640 Books and Periodicals	85,655.30
Total Supplies	\$239,488.28
700 Property	
752 Capital Equipment – Original and Additional	81,309.00
Total Property	\$81,309.00
800 Other Objects	
810 Dues and Fees	12,046.00
Total Other Objects	\$12,046.00
Total 1000 Instruction	\$12,968,766.73

General Fund (10)

1100 Regular Programs – Elementary / Secondary

	<u>Elementary</u>	<u>Secondary</u>	<u>Federal</u>	<u>Total</u>
100 Personnel Services – Salaries				
100 Personnel Services – Salaries	2,159,474.11	2,811,344.55	207,220.40	5,178,039.06
Total Personnel Services – Salaries	\$2,159,474.11	\$2,811,344.55	\$207,220.40	\$5,178,039.06
200 Personnel Services – Employee Benefits				
210 Group Insurance – Contracted Provider	402,669.21	611,625.10	29,131.87	1,043,426.18
220 Social Security Contributions	157,593.71	205,930.37	15,129.49	378,653.57
230 PSERS Retirement Contributions	687,614.96	887,408.17	66,677.38	1,641,700.51
250 Unemployment Compensation	8,261.45	11,076.15	1,291.62	20,629.22
260 Workers' Compensation	6,093.90	2,343.80	1,347.01	9,784.71
Total Personnel Services – Employee Benefits	\$1,262,233.23	\$1,718,383.59	\$113,577.37	\$3,094,194.19
300 Purchased Professional and Technical Services				
310 Official / Administrative Services	36,351.38	97,148.00		133,499.38
Total Purchased Professional and Technical Services	\$36,351.38	\$97,148.00		\$133,499.38
400 Purchased Property Services				
430 Repairs and Maintenance Services	10,768.90	23,116.75		33,885.65
Total Purchased Property Services	\$10,768.90	\$23,116.75		\$33,885.65
500 Other Purchased Services				
550 Printing and Binding		729.80		729.80
561 Tuition To Other School Districts Within the State		20,449.63		20,449.63
562 Tuition To Pennsylvania Charter Schools	71,133.12	188,056.70		259,189.82
566 Tuition To Institutions of Higher Education and Technical Institutes		6,000.00		6,000.00
568 Tuition To Private Residential Rehabilitative Institutions (PRRI) [In-State] and Detention Centers	840.00	90,009.29		90,849.29
580 Travel	869.00	80.00	674.29	1,623.29
Total Other Purchased Services	\$72,842.12	\$305,325.42	\$674.29	\$378,841.83
600 Supplies				
610 General Supplies	56,323.55	59,937.97	19,766.51	136,028.03
640 Books and Periodicals	34,024.19	36,289.87	362.49	70,676.55
Total Supplies	\$90,347.74	\$96,227.84	\$20,129.00	\$206,704.58
700 Property				
752 Capital Equipment – Original and Additional	17,179.00	60,431.00	3,699.00	81,309.00
Total Property	\$17,179.00	\$60,431.00	\$3,699.00	\$81,309.00
800 Other Objects				
810 Dues and Fees		4,321.00		4,321.00
Total Other Objects		\$4,321.00		\$4,321.00
Total 1100 Regular Programs – Elementary / Secondary	\$3,649,196.48	\$5,116,298.15	\$345,300.06	\$9,110,794.69

General Fund (10)

1110 Regular Programs

	<u>Elementary</u>	<u>Secondary</u>	<u>Federal</u>	<u>Total</u>
100 Personnel Services – Salaries				
100 Personnel Services – Salaries	2,159,474.11	2,811,344.55		4,970,818.66
Total Personnel Services – Salaries	\$2,159,474.11	\$2,811,344.55		\$4,970,818.66
200 Personnel Services – Employee Benefits				
210 Group Insurance – Contracted Provider	402,669.21	611,625.10		1,014,294.31
220 Social Security Contributions	157,593.71	205,930.37		363,524.08
230 PSERS Retirement Contributions	687,614.96	887,408.17		1,575,023.13
250 Unemployment Compensation	8,261.45	11,076.15		19,337.60
260 Workers' Compensation	6,093.90	2,343.80		8,437.70
Total Personnel Services – Employee Benefits	\$1,262,233.23	\$1,718,383.59		\$2,980,616.82
300 Purchased Professional and Technical Services				
310 Official / Administrative Services	36,351.38	97,148.00		133,499.38
Total Purchased Professional and Technical Services	\$36,351.38	\$97,148.00		\$133,499.38
400 Purchased Property Services				
430 Repairs and Maintenance Services	10,768.90	23,116.75		33,885.65
Total Purchased Property Services	\$10,768.90	\$23,116.75		\$33,885.65
500 Other Purchased Services				
550 Printing and Binding		729.80		729.80
561 Tuition To Other School Districts Within the State		20,449.63		20,449.63
562 Tuition To Pennsylvania Charter Schools	71,133.12	188,056.70		259,189.82
566 Tuition To Institutions of Higher Education and Technical Institutes		6,000.00		6,000.00
568 Tuition To Private Residential Rehabilitative Institutions (PRRI) [In-State] and Detention Centers	840.00	90,009.29		90,849.29
580 Travel	869.00	80.00		949.00
Total Other Purchased Services	\$72,842.12	\$305,325.42		\$378,167.54
600 Supplies				
610 General Supplies	56,323.55	59,937.97		116,261.52
640 Books and Periodicals	34,024.19	36,289.87		70,314.06
Total Supplies	\$90,347.74	\$96,227.84		\$186,575.58
700 Property				
752 Capital Equipment – Original and Additional	17,179.00	60,431.00		77,610.00
Total Property	\$17,179.00	\$60,431.00		\$77,610.00
800 Other Objects				
810 Dues and Fees		4,321.00		4,321.00
Total Other Objects		\$4,321.00		\$4,321.00
Total 1110 Regular Programs	\$3,649,196.48	\$5,116,298.15		\$8,765,494.63

General Fund (10)

1190 Federally-Funded Regular Programs

100 Personnel Services – Salaries

100 Personnel Services – Salaries

Total Personnel Services – Salaries

200 Personnel Services – Employee Benefits

210 Group Insurance – Contracted Provider

220 Social Security Contributions

230 PSERS Retirement Contributions

250 Unemployment Compensation

260 Workers' Compensation

Total Personnel Services – Employee Benefits

500 Other Purchased Services

580 Travel

Total Other Purchased Services

600 Supplies

610 General Supplies

640 Books and Periodicals

Total Supplies

700 Property

752 Capital Equipment – Original and Additional

Total Property

Total 1190 Federally-Funded Regular Programs

	<u>Elementary</u>	<u>Secondary</u>	<u>Federal</u>	<u>Total</u>
			207,220.40	207,220.40
			\$207,220.40	\$207,220.40
			29,131.87	29,131.87
			15,129.49	15,129.49
			66,677.38	66,677.38
			1,291.62	1,291.62
			1,347.01	1,347.01
			\$113,577.37	\$113,577.37
			674.29	674.29
			\$674.29	\$674.29
			19,766.51	19,766.51
			362.49	362.49
			\$20,129.00	\$20,129.00
			3,699.00	3,699.00
			\$3,699.00	\$3,699.00
			\$345,300.06	\$345,300.06

General Fund (10)

1200 Special Programs – Elementary / Secondary

	<u>Elementary</u>	<u>Secondary</u>	<u>Federal</u>	<u>Total</u>
100 Personnel Services – Salaries				
100 Personnel Services – Salaries	275,921.00	535,892.27	202,425.20	1,014,238.47
Total Personnel Services – Salaries	\$275,921.00	\$535,892.27	\$202,425.20	\$1,014,238.47
200 Personnel Services – Employee Benefits				
210 Group Insurance – Contracted Provider	58,995.35	133,467.45	32,076.68	224,539.48
220 Social Security Contributions	20,151.64	39,688.63	13,976.12	73,816.39
230 PSERS Retirement Contributions	85,710.00	233,826.67		319,536.67
250 Unemployment Compensation	2,867.14	4,168.12		7,035.26
260 Workers' Compensation	1,793.53	4,795.53		6,589.06
Total Personnel Services – Employee Benefits	\$169,517.66	\$415,946.40	\$46,052.80	\$631,516.86
300 Purchased Professional and Technical Services				
322 Professional Educational Services – lus	582,450.90	425,671.65		1,008,122.55
Total Purchased Professional and Technical Services	\$582,450.90	\$425,671.65		\$1,008,122.55
400 Purchased Property Services				
430 Repairs and Maintenance Services	377.00	377.00		754.00
440 Rentals		5,450.82		5,450.82
Total Purchased Property Services	\$377.00	\$5,827.82		\$6,204.82
500 Other Purchased Services				
510 Student Transportation Services		1,394.25		1,394.25
562 Tuition To Pennsylvania Charter Schools	20,903.16	102,247.55		123,150.71
580 Travel		40.00		40.00
594 IU Payment By Withholding for Institutionalized Children’s Programs – Special Classes		11,601.16		11,601.16
Total Other Purchased Services	\$20,903.16	\$115,282.96		\$136,186.12
600 Supplies				
610 General Supplies	945.07	5,198.54		6,143.61
640 Books and Periodicals	321.33	14,657.42		14,978.75
Total Supplies	\$1,266.40	\$19,855.96		\$21,122.36
800 Other Objects				
810 Dues and Fees	160.00	7,565.00		7,725.00
Total Other Objects	\$160.00	\$7,565.00		\$7,725.00
Total 1200 Special Programs – Elementary / Secondary	\$1,050,596.12	\$1,526,042.06	\$248,478.00	\$2,825,116.18

REVISED SUBMISSION

General Fund (10)

1210 Life Skills Support

300 Purchased Professional and Technical Services

322 Professional Educational Services – lus

Total Purchased Professional and Technical Services

Total 1210 Life Skills Support

	<u>Elementary</u>	<u>Secondary</u>	<u>Federal</u>	<u>Total</u>
	91,242.35	13,995.10		105,237.45
	\$91,242.35	\$13,995.10		\$105,237.45
	\$91,242.35	\$13,995.10		\$105,237.45

REVISED SUBMISSION

General Fund (10)

1220 Sensory Support

300 Purchased Professional and Technical Services

322 Professional Educational Services – lus

Total Purchased Professional and Technical Services

Total 1220 Sensory Support

	<u>Elementary</u>	<u>Secondary</u>	<u>Federal</u>	<u>Total</u>
	55,396.70	94,163.50		149,560.20
	\$55,396.70	\$94,163.50		\$149,560.20
	\$55,396.70	\$94,163.50		\$149,560.20

General Fund (10)

1230 Emotional Support

100 Personnel Services – Salaries

	<u>Elementary</u>	<u>Secondary</u>	<u>Federal</u>	<u>Total</u>
100 Personnel Services – Salaries		2,600.00		2,600.00

Total Personnel Services – Salaries

\$2,600.00	\$2,600.00
-------------------	-------------------

200 Personnel Services – Employee Benefits

210 Group Insurance – Contracted Provider		2,160.00		2,160.00
---	--	----------	--	----------

220 Social Security Contributions		198.91		198.91
-----------------------------------	--	--------	--	--------

250 Unemployment Compensation		27.00		27.00
-------------------------------	--	-------	--	-------

260 Workers' Compensation		16.91		16.91
---------------------------	--	-------	--	-------

Total Personnel Services – Employee Benefits

\$2,402.82	\$2,402.82
-------------------	-------------------

300 Purchased Professional and Technical Services

322 Professional Educational Services – Ius	160,895.95	88,208.40		249,104.35
---	------------	-----------	--	------------

Total Purchased Professional and Technical Services

\$160,895.95	\$88,208.40	\$249,104.35
---------------------	--------------------	---------------------

600 Supplies

610 General Supplies		1,602.27		1,602.27
----------------------	--	----------	--	----------

640 Books and Periodicals		149.85		149.85
---------------------------	--	--------	--	--------

Total Supplies

\$1,752.12	\$1,752.12
-------------------	-------------------

Total 1230 Emotional Support

\$160,895.95	\$94,963.34	\$255,859.29
---------------------	--------------------	---------------------

General Fund (10)

1240 Academic Support

	<u>Elementary</u>	<u>Secondary</u>	<u>Federal</u>	<u>Total</u>
100 Personnel Services – Salaries				
100 Personnel Services – Salaries	275,921.00	533,292.27	202,425.20	1,011,638.47
Total Personnel Services – Salaries	\$275,921.00	\$533,292.27	\$202,425.20	\$1,011,638.47
200 Personnel Services – Employee Benefits				
210 Group Insurance – Contracted Provider	58,995.35	131,307.45	32,076.68	222,379.48
220 Social Security Contributions	20,151.64	39,489.72	13,976.12	73,617.48
230 PSERS Retirement Contributions	85,710.00	233,826.67		319,536.67
250 Unemployment Compensation	2,867.14	4,141.12		7,008.26
260 Workers' Compensation	1,793.53	4,778.62		6,572.15
Total Personnel Services – Employee Benefits	\$169,517.66	\$413,543.58	\$46,052.80	\$629,114.04
300 Purchased Professional and Technical Services				
322 Professional Educational Services – lus	162,751.69	38,104.79		200,856.48
Total Purchased Professional and Technical Services	\$162,751.69	\$38,104.79		\$200,856.48
400 Purchased Property Services				
430 Repairs and Maintenance Services	377.00	377.00		754.00
440 Rentals		5,450.82		5,450.82
Total Purchased Property Services	\$377.00	\$5,827.82		\$6,204.82
500 Other Purchased Services				
510 Student Transportation Services		1,394.25		1,394.25
580 Travel		40.00		40.00
Total Other Purchased Services		\$1,434.25		\$1,434.25
600 Supplies				
610 General Supplies	945.07	3,596.27		4,541.34
640 Books and Periodicals	321.33	14,507.57		14,828.90
Total Supplies	\$1,266.40	\$18,103.84		\$19,370.24
800 Other Objects				
810 Dues and Fees	160.00	7,565.00		7,725.00
Total Other Objects	\$160.00	\$7,565.00		\$7,725.00
Total 1240 Academic Support	\$609,993.75	\$1,017,871.55	\$248,478.00	\$1,876,343.30

General Fund (10)

1241 Learning Support – Public

	<u>Elementary</u>	<u>Secondary</u>	<u>Federal</u>	<u>Total</u>
100 Personnel Services – Salaries				
100 Personnel Services – Salaries	275,921.00	533,292.27	202,425.20	1,011,638.47
Total Personnel Services – Salaries	\$275,921.00	\$533,292.27	\$202,425.20	\$1,011,638.47
200 Personnel Services – Employee Benefits				
210 Group Insurance – Contracted Provider	58,995.35	131,307.45	32,076.68	222,379.48
220 Social Security Contributions	20,151.64	39,489.72	13,976.12	73,617.48
230 PSERS Retirement Contributions	85,710.00	233,826.67		319,536.67
250 Unemployment Compensation	2,867.14	4,141.12		7,008.26
260 Workers' Compensation	1,793.53	4,778.62		6,572.15
Total Personnel Services – Employee Benefits	\$169,517.66	\$413,543.58	\$46,052.80	\$629,114.04
300 Purchased Professional and Technical Services				
322 Professional Educational Services – lus	162,751.69	38,104.79		200,856.48
Total Purchased Professional and Technical Services	\$162,751.69	\$38,104.79		\$200,856.48
400 Purchased Property Services				
430 Repairs and Maintenance Services	377.00	377.00		754.00
440 Rentals		4,969.57		4,969.57
Total Purchased Property Services	\$377.00	\$5,346.57		\$5,723.57
600 Supplies				
610 General Supplies	553.44	2,480.44		3,033.88
640 Books and Periodicals	321.33	14,507.57		14,828.90
Total Supplies	\$874.77	\$16,988.01		\$17,862.78
Total 1241 Learning Support – Public	\$609,442.12	\$1,007,275.22	\$248,478.00	\$1,865,195.34

General Fund (10)

1243 Gifted Support

400 Purchased Property Services

440 Rentals 481.25 481.25

Total Purchased Property Services

\$481.25 \$481.25

500 Other Purchased Services

510 Student Transportation Services 1,394.25 1,394.25

580 Travel 40.00 40.00

Total Other Purchased Services

\$1,434.25 \$1,434.25

600 Supplies

610 General Supplies 391.63 1,115.83 1,507.46

Total Supplies

\$391.63 \$1,115.83 \$1,507.46

800 Other Objects

810 Dues and Fees 160.00 7,565.00 7,725.00

Total Other Objects

\$160.00 \$7,565.00 \$7,725.00

Total 1243 Gifted Support

\$551.63 \$10,596.33 \$11,147.96

REVISED SUBMISSION

General Fund (10)

1260 Physical Support

300 Purchased Professional and Technical Services

322 Professional Educational Services – lus

Total Purchased Professional and Technical Services

Total 1260 Physical Support

	<u>Elementary</u>	<u>Secondary</u>	<u>Federal</u>	<u>Total</u>
	8,378.95	8,871.85		17,250.80
	\$8,378.95	\$8,871.85		\$17,250.80
	\$8,378.95	\$8,871.85		\$17,250.80

REVISED SUBMISSION

General Fund (10)

1270 Multi-Handicapped Support

300 Purchased Professional and Technical Services

322 Professional Educational Services – lus

Total Purchased Professional and Technical Services

Total 1270 Multi-Handicapped Support

	<u>Elementary</u>	<u>Secondary</u>	<u>Federal</u>	<u>Total</u>
	63,847.75	73,831.65		137,679.40
	\$63,847.75	\$73,831.65		\$137,679.40
	\$63,847.75	\$73,831.65		\$137,679.40

General Fund (10)

1290 Special Programs - Other Support

300 Purchased Professional and Technical Services

322 Professional Educational Services – Ius

Total Purchased Professional and Technical Services

500 Other Purchased Services

562 Tuition To Pennsylvania Charter Schools

594 IU Payment By Withholding for Institutionalized Children’s Programs – Special Classes

Total Other Purchased Services

Total 1290 Special Programs - Other Support

	<u>Elementary</u>	<u>Secondary</u>	<u>Federal</u>	<u>Total</u>
322 Professional Educational Services – Ius	39,937.51	108,496.36		148,433.87
Total Purchased Professional and Technical Services	\$39,937.51	\$108,496.36		\$148,433.87
562 Tuition To Pennsylvania Charter Schools	20,903.16	102,247.55		123,150.71
594 IU Payment By Withholding for Institutionalized Children’s Programs – Special Classes		11,601.16		11,601.16
Total Other Purchased Services	\$20,903.16	\$113,848.71		\$134,751.87
Total 1290 Special Programs - Other Support	\$60,840.67	\$222,345.07		\$283,185.74

General Fund (10)

1300 Vocational Education

100 Personnel Services – Salaries

	<u>Elementary</u>	<u>Secondary</u>	<u>Federal</u>	<u>Total</u>
100 Personnel Services – Salaries		240,434.00		240,434.00
Total Personnel Services – Salaries		\$240,434.00		\$240,434.00

200 Personnel Services – Employee Benefits

210 Group Insurance – Contracted Provider		44,089.04		44,089.04
220 Social Security Contributions		17,346.23		17,346.23
230 PSERS Retirement Contributions		78,279.88		78,279.88
250 Unemployment Compensation		780.72		780.72
260 Workers' Compensation		1,562.89		1,562.89
Total Personnel Services – Employee Benefits		\$142,058.76		\$142,058.76

400 Purchased Property Services

430 Repairs and Maintenance Services		90.00		90.00
Total Purchased Property Services		\$90.00		\$90.00

500 Other Purchased Services

564 Tuition To Career and Technology Centers		215,213.02		215,213.02
Total Other Purchased Services		\$215,213.02		\$215,213.02

600 Supplies

610 General Supplies		11,661.34		11,661.34
Total Supplies		\$11,661.34		\$11,661.34

Total 1300 Vocational Education

		\$609,457.12		\$609,457.12
--	--	---------------------	--	---------------------

General Fund (10)

	<u>Elementary</u>	<u>Secondary</u>	<u>Federal</u>	<u>Total</u>
1400 Other Instructional Programs – Elementary / Secondary				
100 Personnel Services – Salaries				
100 Personnel Services – Salaries	466.39	3,615.66		4,082.05
Total Personnel Services – Salaries	\$466.39	\$3,615.66		\$4,082.05
200 Personnel Services – Employee Benefits				
220 Social Security Contributions	35.32	255.46		290.78
230 PSERS Retirement Contributions	151.91	1,101.51		1,253.42
250 Unemployment Compensation	8.03	18.00		26.03
260 Workers' Compensation	3.03	23.53		26.56
Total Personnel Services – Employee Benefits	\$198.29	\$1,398.50		\$1,596.79
300 Purchased Professional and Technical Services				
310 Official / Administrative Services	215,042.65	202,177.25		417,219.90
Total Purchased Professional and Technical Services	\$215,042.65	\$202,177.25		\$417,219.90
Total 1400 Other Instructional Programs – Elementary / Secondary	\$215,707.33	\$207,191.41		\$422,898.74

General Fund (10)

1430 Homebound Instruction

100 Personnel Services – Salaries

	<u>Elementary</u>	<u>Secondary</u>	<u>Federal</u>	<u>Total</u>
100 Personnel Services – Salaries	466.39	3,615.66		4,082.05
Total Personnel Services – Salaries	\$466.39	\$3,615.66		\$4,082.05

200 Personnel Services – Employee Benefits

220 Social Security Contributions	35.32	255.46		290.78
230 PSERS Retirement Contributions	151.91	1,101.51		1,253.42
250 Unemployment Compensation	8.03	18.00		26.03
260 Workers' Compensation	3.03	23.53		26.56
Total Personnel Services – Employee Benefits	\$198.29	\$1,398.50		\$1,596.79
Total 1430 Homebound Instruction	\$664.68	\$5,014.16		\$5,678.84

REVISED SUBMISSION

General Fund (10)

	<u>Elementary</u>	<u>Secondary</u>	<u>Federal</u>	<u>Total</u>
1440 Alternative Regular Education Programs				
300 <u>Purchased Professional and Technical Services</u>				
310 Official / Administrative Services	215,042.65	202,177.25		417,219.90
Total Purchased Professional and Technical Services	\$215,042.65	\$202,177.25		\$417,219.90
Total 1440 Alternative Regular Education Programs	\$215,042.65	\$202,177.25		\$417,219.90

REVISED SUBMISSION

General Fund (10)

	<u>Elementary</u>	<u>Secondary</u>	<u>Federal</u>	<u>Total</u>
1442 Alternative Education Programs				
300 <u>Purchased Professional and Technical Services</u>				
310 Official / Administrative Services	215,042.65	202,177.25		417,219.90
Total Purchased Professional and Technical Services	\$215,042.65	\$202,177.25		\$417,219.90
Total 1442 Alternative Education Programs	\$215,042.65	\$202,177.25		\$417,219.90

REVISED SUBMISSION

General Fund (10)

1700 Higher Education Programs for Secondary Students

Elementary

Secondary

Federal

Total

500 Other Purchased Services

566 Tuition To Institutions of Higher Education and Technical Institutes

500.00

Total Other Purchased Services

\$500.00

Total 1700 Higher Education Programs for Secondary Students

\$500.00

General Fund (10)

2000 Support Services

Total

100 Personnel Services – Salaries

100 Personnel Services – Salaries 2,765,251.97

Total Personnel Services – Salaries \$2,765,251.97

200 Personnel Services – Employee Benefits

210 Group Insurance – Contracted Provider 702,360.92

220 Social Security Contributions 205,020.23

230 PSERS Retirement Contributions 861,266.14

240 Tuition Reimbursement 57,484.00

250 Unemployment Compensation 15,014.94

260 Workers' Compensation 18,362.66

299 All Other Employee Benefits 3,527.52

Total Personnel Services – Employee Benefits \$1,863,036.41

300 Purchased Professional and Technical Services

310 Official / Administrative Services 308,406.68

322 Professional Educational Services – lus 88,109.50

Total Purchased Professional and Technical Services \$396,516.18

400 Purchased Property Services

410 Cleaning Services 18,327.10

420 Utility Services 49,758.58

430 Repairs and Maintenance Services 101,781.62

440 Rentals 11,687.66

Total Purchased Property Services \$181,554.96

500 Other Purchased Services

515 Public Carriers 5,369.12

516 Student Transportation Services From the IU 6,189.79

520 Insurance – General 6,402.00

522 Automotive Liability Insurance 19,262.00

523 General Property and Liability Insurance 58,414.00

529 Other Insurance 7,649.00

530 Communications 17,101.33

549 Other Advertising/Public Relations 16,928.52

580 Travel 41,810.27

Total Other Purchased Services \$179,126.03

600 Supplies

610 General Supplies 313,206.93

620 Energy 401,632.00

640 Books and Periodicals 3,513.25

650 Supplies & Fees – Technology Related 19,490.90

Total Supplies \$737,843.08

700 Property

752 Capital Equipment – Original and Additional 22,135.30

Total Property \$22,135.30

REVISED SUBMISSION

General Fund (10)

2000 Support Services

800 Other Objects

810 Dues and Fees

Total Other Objects

Total 2000 Support Services

Total

45,891.93

\$45,891.93

\$6,191,355.86

General Fund (10)

2100 Support Services – Students

100 Personnel Services – Salaries

	<u>Elementary</u>	<u>Secondary</u>	<u>Federal</u>	<u>Total</u>
100 Personnel Services – Salaries	193,148.99	266,166.48		459,315.47

Total Personnel Services – Salaries

	\$193,148.99	\$266,166.48		\$459,315.47
--	---------------------	---------------------	--	---------------------

200 Personnel Services – Employee Benefits

210 Group Insurance – Contracted Provider	25,828.43	58,054.64		83,883.07
---	-----------	-----------	--	-----------

220 Social Security Contributions	14,258.17	19,764.38		34,022.55
-----------------------------------	-----------	-----------	--	-----------

230 PSERS Retirement Contributions	61,712.52	86,726.77		148,439.29
------------------------------------	-----------	-----------	--	------------

250 Unemployment Compensation	539.32	1,053.16		1,592.48
-------------------------------	--------	----------	--	----------

260 Workers' Compensation	1,262.22	1,743.42		3,005.64
---------------------------	----------	----------	--	----------

Total Personnel Services – Employee Benefits

	\$103,600.66	\$167,342.37		\$270,943.03
--	---------------------	---------------------	--	---------------------

300 Purchased Professional and Technical Services

322 Professional Educational Services – lus	29,369.83	58,739.67		88,109.50
---	-----------	-----------	--	-----------

Total Purchased Professional and Technical Services

	\$29,369.83	\$58,739.67		\$88,109.50
--	--------------------	--------------------	--	--------------------

500 Other Purchased Services

580 Travel	413.54	1,487.75		1,901.29
------------	--------	----------	--	----------

Total Other Purchased Services

	\$413.54	\$1,487.75		\$1,901.29
--	-----------------	-------------------	--	-------------------

600 Supplies

610 General Supplies	5,137.02	4,773.59		9,910.61
----------------------	----------	----------	--	----------

Total Supplies

	\$5,137.02	\$4,773.59		\$9,910.61
--	-------------------	-------------------	--	-------------------

800 Other Objects

810 Dues and Fees	5,055.00	10,110.00		15,165.00
-------------------	----------	-----------	--	-----------

Total Other Objects

	\$5,055.00	\$10,110.00		\$15,165.00
--	-------------------	--------------------	--	--------------------

Total 2100 Support Services – Students

	\$336,725.04	\$508,619.86		\$845,344.90
--	---------------------	---------------------	--	---------------------

General Fund (10)

2110 Supervision of Student Services

100 Personnel Services – Salaries

100 Personnel Services – Salaries

Total Personnel Services – Salaries

200 Personnel Services – Employee Benefits

210 Group Insurance – Contracted Provider

220 Social Security Contributions

230 PSERS Retirement Contributions

250 Unemployment Compensation

260 Workers' Compensation

Total Personnel Services – Employee Benefits

500 Other Purchased Services

580 Travel

Total Other Purchased Services

600 Supplies

610 General Supplies

Total Supplies

Total 2110 Supervision of Student Services

	<u>Elementary</u>	<u>Secondary</u>	<u>Federal</u>	<u>Total</u>
	43,710.63	87,421.25		131,131.88
	\$43,710.63	\$87,421.25		\$131,131.88
	5,394.21	10,788.41		16,182.62
	3,234.53	6,469.07		9,703.60
	14,236.54	28,473.09		42,709.63
	133.34	266.67		400.01
	284.18	568.36		852.54
	\$23,282.80	\$46,565.60		\$69,848.40
	413.54	827.08		1,240.62
	\$413.54	\$827.08		\$1,240.62
	1,149.53	2,299.05		3,448.58
	\$1,149.53	\$2,299.05		\$3,448.58
	\$68,556.50	\$137,112.98		\$205,669.48

General Fund (10)

2111 Supervision of Student Services – Head of Component

	<u>Elementary</u>	<u>Secondary</u>	<u>Federal</u>	<u>Total</u>
100 Personnel Services – Salaries				
100 Personnel Services – Salaries	43,710.63	87,421.25		131,131.88
Total Personnel Services – Salaries	\$43,710.63	\$87,421.25		\$131,131.88
200 Personnel Services – Employee Benefits				
210 Group Insurance – Contracted Provider	5,394.21	10,788.41		16,182.62
220 Social Security Contributions	3,234.53	6,469.07		9,703.60
230 PSERS Retirement Contributions	14,236.54	28,473.09		42,709.63
250 Unemployment Compensation	133.34	266.67		400.01
260 Workers' Compensation	284.18	568.36		852.54
Total Personnel Services – Employee Benefits	\$23,282.80	\$46,565.60		\$69,848.40
500 Other Purchased Services				
580 Travel	413.54	827.08		1,240.62
Total Other Purchased Services	\$413.54	\$827.08		\$1,240.62
600 Supplies				
610 General Supplies	1,149.53	2,299.05		3,448.58
Total Supplies	\$1,149.53	\$2,299.05		\$3,448.58
Total 2111 Supervision of Student Services – Head of Component	\$68,556.50	\$137,112.98		\$205,669.48

General Fund (10)

2120 Guidance Services

100 Personnel Services – Salaries

100 Personnel Services – Salaries

Elementary

Secondary

Federal

Total

149,438.36

178,745.23

328,183.59

Total Personnel Services – Salaries

\$149,438.36

\$178,745.23

\$328,183.59

200 Personnel Services – Employee Benefits

210 Group Insurance – Contracted Provider

20,434.22

47,266.23

67,700.45

220 Social Security Contributions

11,023.64

13,295.31

24,318.95

230 PSERS Retirement Contributions

47,475.98

58,253.68

105,729.66

250 Unemployment Compensation

405.98

786.49

1,192.47

260 Workers' Compensation

978.04

1,175.06

2,153.10

Total Personnel Services – Employee Benefits

\$80,317.86

\$120,776.77

\$201,094.63

500 Other Purchased Services

580 Travel

660.67

660.67

Total Other Purchased Services

\$660.67

\$660.67

600 Supplies

610 General Supplies

3,987.49

2,474.54

6,462.03

Total Supplies

\$3,987.49

\$2,474.54

\$6,462.03

800 Other Objects

810 Dues and Fees

5,055.00

10,110.00

15,165.00

Total Other Objects

\$5,055.00

\$10,110.00

\$15,165.00

Total 2120 Guidance Services

\$238,798.71

\$312,767.21

\$551,565.92

REVISED SUBMISSION

General Fund (10)

2140 Psychological Services

300 Purchased Professional and Technical Services

322 Professional Educational Services – lus

Total Purchased Professional and Technical Services

Total 2140 Psychological Services

	<u>Elementary</u>	<u>Secondary</u>	<u>Federal</u>	<u>Total</u>
	29,369.83	58,739.67		88,109.50
	\$29,369.83	\$58,739.67		\$88,109.50
	\$29,369.83	\$58,739.67		\$88,109.50

General Fund (10)

2200 Support Services – Instructional Staff

	<u>Elementary</u>	<u>Secondary</u>	<u>Federal</u>	<u>Total</u>
100 Personnel Services – Salaries				
100 Personnel Services – Salaries	91,243.58	106,847.46		198,091.04
Total Personnel Services – Salaries	\$91,243.58	\$106,847.46		\$198,091.04
200 Personnel Services – Employee Benefits				
210 Group Insurance – Contracted Provider	12,936.07	24,392.36		37,328.43
220 Social Security Contributions	6,728.04	7,694.44		14,422.48
230 PSERS Retirement Contributions	29,344.31	33,944.16		63,288.47
240 Tuition Reimbursement	18,156.00	36,312.00		54,468.00
250 Unemployment Compensation	523.44	857.45		1,380.89
260 Workers' Compensation	593.01	694.37		1,287.38
Total Personnel Services – Employee Benefits	\$68,280.87	\$103,894.78		\$172,175.65
300 Purchased Professional and Technical Services				
310 Official / Administrative Services	16,085.21	32,170.42		48,255.63
Total Purchased Professional and Technical Services	\$16,085.21	\$32,170.42		\$48,255.63
500 Other Purchased Services				
580 Travel	6,691.77	13,383.53		20,075.30
Total Other Purchased Services	\$6,691.77	\$13,383.53		\$20,075.30
600 Supplies				
610 General Supplies	24,855.17	59,426.21		84,281.38
640 Books and Periodicals	114.39	1,650.38		1,764.77
650 Supplies & Fees – Technology Related	1,110.97	2,221.93		3,332.90
Total Supplies	\$26,080.53	\$63,298.52		\$89,379.05
700 Property				
752 Capital Equipment – Original and Additional	5,258.14	10,420.65		15,678.79
Total Property	\$5,258.14	\$10,420.65		\$15,678.79
800 Other Objects				
810 Dues and Fees	230.00	1,355.00		1,585.00
Total Other Objects	\$230.00	\$1,355.00		\$1,585.00
Total 2200 Support Services – Instructional Staff	\$213,870.10	\$331,370.36		\$545,240.46

General Fund (10)

2240 Computer-Assisted Instruction Support Services

	<u>Elementary</u>	<u>Secondary</u>	<u>Federal</u>	<u>Total</u>
100 Personnel Services – Salaries				
100 Personnel Services – Salaries	20,419.02	38,613.57		59,032.59
Total Personnel Services – Salaries	\$20,419.02	\$38,613.57		\$59,032.59
200 Personnel Services – Employee Benefits				
210 Group Insurance – Contracted Provider	225.00	9,679.07		9,904.07
220 Social Security Contributions	1,562.01	2,802.01		4,364.02
230 PSERS Retirement Contributions	6,650.48	12,507.54		19,158.02
250 Unemployment Compensation	228.87	435.14		664.01
260 Workers' Compensation	132.76	251.03		383.79
Total Personnel Services – Employee Benefits	\$8,799.12	\$25,674.79		\$34,473.91
300 Purchased Professional and Technical Services				
310 Official / Administrative Services	16,085.21	32,170.42		48,255.63
Total Purchased Professional and Technical Services	\$16,085.21	\$32,170.42		\$48,255.63
500 Other Purchased Services				
580 Travel	567.39	1,134.77		1,702.16
Total Other Purchased Services	\$567.39	\$1,134.77		\$1,702.16
600 Supplies				
610 General Supplies	24,074.19	57,915.97		81,990.16
650 Supplies & Fees – Technology Related	1,110.97	2,221.93		3,332.90
Total Supplies	\$25,185.16	\$60,137.90		\$85,323.06
700 Property				
752 Capital Equipment – Original and Additional	5,258.14	10,420.65		15,678.79
Total Property	\$5,258.14	\$10,420.65		\$15,678.79
Total 2240 Computer-Assisted Instruction Support Services	\$76,314.04	\$168,152.10		\$244,466.14

General Fund (10)

2250 School Library Services

100 Personnel Services – Salaries

100 Personnel Services – Salaries

Elementary

Secondary

Federal

Total

51,617.56

17,244.89

68,862.45

Total Personnel Services – Salaries

\$51,617.56

\$17,244.89

\$68,862.45

200 Personnel Services – Employee Benefits

210 Group Insurance – Contracted Provider

6,425.30

2,141.75

8,567.05

220 Social Security Contributions

3,815.74

1,275.30

5,091.04

230 PSERS Retirement Contributions

16,616.46

5,186.22

21,802.68

250 Unemployment Compensation

162.01

51.43

213.44

260 Workers' Compensation

335.45

112.07

447.52

Total Personnel Services – Employee Benefits

\$27,354.96

\$8,766.77

\$36,121.73

600 Supplies

610 General Supplies

314.31

576.91

891.22

640 Books and Periodicals

1,421.60

1,421.60

Total Supplies

\$314.31

\$1,998.51

\$2,312.82

800 Other Objects

810 Dues and Fees

230.00

1,355.00

1,585.00

Total Other Objects

\$230.00

\$1,355.00

\$1,585.00

Total 2250 School Library Services

\$79,516.83

\$29,365.17

\$108,882.00

General Fund (10)

2260 Instruction and Curriculum Development Services

	<u>Elementary</u>	<u>Secondary</u>	<u>Federal</u>	<u>Total</u>
100 Personnel Services – Salaries				
100 Personnel Services – Salaries	18,357.00	45,889.00		64,246.00
Total Personnel Services – Salaries	\$18,357.00	\$45,889.00		\$64,246.00
200 Personnel Services – Employee Benefits				
210 Group Insurance – Contracted Provider	6,285.77	12,571.54		18,857.31
220 Social Security Contributions	1,288.97	3,241.86		4,530.83
230 PSERS Retirement Contributions	5,800.53	14,589.36		20,389.89
250 Unemployment Compensation	124.06	319.88		443.94
260 Workers' Compensation	119.28	298.15		417.43
Total Personnel Services – Employee Benefits	\$13,618.61	\$31,020.79		\$44,639.40
600 Supplies				
610 General Supplies	466.67	933.33		1,400.00
640 Books and Periodicals	114.39	228.78		343.17
Total Supplies	\$581.06	\$1,162.11		\$1,743.17
Total 2260 Instruction and Curriculum Development Services	\$32,556.67	\$78,071.90		\$110,628.57

General Fund (10)

2270 Instructional Staff Professional Development Services

	<u>Elementary</u>	<u>Secondary</u>	<u>Federal</u>	<u>Total</u>
100 Personnel Services – Salaries				
100 Personnel Services – Salaries	850.00	5,100.00		5,950.00
Total Personnel Services – Salaries	\$850.00	\$5,100.00		\$5,950.00
200 Personnel Services – Employee Benefits				
220 Social Security Contributions	61.32	375.27		436.59
230 PSERS Retirement Contributions	276.84	1,661.04		1,937.88
240 Tuition Reimbursement	18,156.00	36,312.00		54,468.00
250 Unemployment Compensation	8.50	51.00		59.50
260 Workers' Compensation	5.52	33.12		38.64
Total Personnel Services – Employee Benefits	\$18,508.18	\$38,432.43		\$56,940.61
500 Other Purchased Services				
580 Travel	6,124.38	12,248.76		18,373.14
Total Other Purchased Services	\$6,124.38	\$12,248.76		\$18,373.14
Total 2270 Instructional Staff Professional Development Services	\$25,482.56	\$55,781.19		\$81,263.75

General Fund (10)

2300 Support Services – Administration

100 Personnel Services – Salaries

	<u>Elementary</u>	<u>Secondary</u>	<u>Federal</u>	<u>Total</u>
100 Personnel Services – Salaries	222,826.51	493,847.17		912,230.58

Total Personnel Services – Salaries	\$222,826.51	\$493,847.17		\$912,230.58
--	---------------------	---------------------	--	---------------------

200 Personnel Services – Employee Benefits

210 Group Insurance – Contracted Provider	71,418.57	143,823.94		250,497.99
220 Social Security Contributions	16,774.27	37,777.47		68,705.16
230 PSERS Retirement Contributions	72,746.78	163,693.18		298,296.47
250 Unemployment Compensation	833.87	2,056.23		3,290.11
260 Workers' Compensation	1,500.15	3,407.48		6,178.74
299 All Other Employee Benefits				2,740.07

Total Personnel Services – Employee Benefits	\$163,273.64	\$350,758.30		\$629,708.54
---	---------------------	---------------------	--	---------------------

300 Purchased Professional and Technical Services

310 Official / Administrative Services		379.00		190,068.08
--	--	--------	--	------------

Total Purchased Professional and Technical Services		\$379.00		\$190,068.08
--	--	-----------------	--	---------------------

400 Purchased Property Services

430 Repairs and Maintenance Services	1,000.00			2,380.00
440 Rentals	689.32	680.46		1,804.01

Total Purchased Property Services	\$1,689.32	\$680.46		\$4,184.01
--	-------------------	-----------------	--	-------------------

500 Other Purchased Services

520 Insurance – General				6,402.00
530 Communications	298.75	659.07		957.82
549 Other Advertising/Public Relations				16,928.52
580 Travel	2,859.60	12,991.32		18,941.76

Total Other Purchased Services	\$3,158.35	\$13,650.39		\$43,230.10
---------------------------------------	-------------------	--------------------	--	--------------------

600 Supplies

610 General Supplies	21,534.60	35,629.33		64,872.27
640 Books and Periodicals	1,169.00	296.25		1,748.48
650 Supplies & Fees – Technology Related	13,943.00			13,943.00

Total Supplies	\$36,646.60	\$35,925.58		\$80,563.75
-----------------------	--------------------	--------------------	--	--------------------

700 Property

752 Capital Equipment – Original and Additional	5,385.81			5,385.81
---	----------	--	--	----------

Total Property	\$5,385.81			\$5,385.81
-----------------------	-------------------	--	--	-------------------

800 Other Objects

810 Dues and Fees	1,254.00	3,261.93		24,110.91
-------------------	----------	----------	--	-----------

Total Other Objects	\$1,254.00	\$3,261.93		\$24,110.91
----------------------------	-------------------	-------------------	--	--------------------

Total 2300 Support Services – Administration	\$434,234.23	\$898,502.83		\$1,889,481.78
---	---------------------	---------------------	--	-----------------------

General Fund (10)

2310 Board Services

Elementary

Secondary

Federal

Total

300 Purchased Professional and Technical Services

310 Official / Administrative Services

20,750.00

Total Purchased Professional and Technical Services

\$20,750.00

500 Other Purchased Services

520 Insurance – General

321.00

549 Other Advertising/Public Relations

16,928.52

Total Other Purchased Services

\$17,249.52

600 Supplies

610 General Supplies

2,376.40

Total Supplies

\$2,376.40

800 Other Objects

810 Dues and Fees

12,310.83

Total Other Objects

\$12,310.83

Total 2310 Board Services

\$52,686.75

REVISED SUBMISSION

General Fund (10)

	<u>Elementary</u>	<u>Secondary</u>	<u>Federal</u>	<u>Total</u>
2330 Tax Assessment and Collection Services				
300 <u>Purchased Professional and Technical Services</u>				
310 Official / Administrative Services				141,074.97
Total Purchased Professional and Technical Services				\$141,074.97
500 <u>Other Purchased Services</u>				
520 Insurance – General				6,081.00
Total Other Purchased Services				\$6,081.00
600 <u>Supplies</u>				
610 General Supplies				83.00
Total Supplies				\$83.00
Total 2330 Tax Assessment and Collection Services				\$147,238.97

REVISED SUBMISSION

General Fund (10)

2350 Legal and Accounting Services

Elementary

Secondary

Federal

Total

300 Purchased Professional and Technical Services

310 Official / Administrative Services

15,377.31

Total Purchased Professional and Technical Services

\$15,377.31

Total 2350 Legal and Accounting Services

\$15,377.31

General Fund (10)

2360 Office of the Superintendent / Executive Director Services

	<u>Elementary</u>	<u>Secondary</u>	<u>Federal</u>	<u>Total</u>
100 Personnel Services – Salaries				
100 Personnel Services – Salaries				195,556.90
Total Personnel Services – Salaries				\$195,556.90
200 Personnel Services – Employee Benefits				
210 Group Insurance – Contracted Provider				35,255.48
220 Social Security Contributions				14,153.42
230 PSERS Retirement Contributions				61,856.51
250 Unemployment Compensation				400.01
260 Workers' Compensation				1,271.11
299 All Other Employee Benefits				2,740.07
Total Personnel Services – Employee Benefits				\$115,676.60
300 Purchased Professional and Technical Services				
310 Official / Administrative Services				1,623.05
Total Purchased Professional and Technical Services				\$1,623.05
400 Purchased Property Services				
430 Repairs and Maintenance Services				1,380.00
440 Rentals				434.23
Total Purchased Property Services				\$1,814.23
500 Other Purchased Services				
530 Communications	260.00	520.00		780.00
580 Travel				3,090.84
Total Other Purchased Services	\$260.00	\$520.00		\$3,870.84
600 Supplies				
610 General Supplies				5,248.94
640 Books and Periodicals				283.23
Total Supplies				\$5,532.17
800 Other Objects				
810 Dues and Fees				4,359.00
Total Other Objects				\$4,359.00
Total 2360 Office of the Superintendent / Executive Director Services	\$260.00	\$520.00		\$328,432.79

General Fund (10)

	<u>Elementary</u>	<u>Secondary</u>	<u>Federal</u>	<u>Total</u>
2380 Office of the Principal Services				
100 Personnel Services – Salaries				
100 Personnel Services – Salaries	222,826.51	493,847.17		716,673.68
Total Personnel Services – Salaries	\$222,826.51	\$493,847.17		\$716,673.68
200 Personnel Services – Employee Benefits				
210 Group Insurance – Contracted Provider	71,418.57	143,823.94		215,242.51
220 Social Security Contributions	16,774.27	37,777.47		54,551.74
230 PSERS Retirement Contributions	72,746.78	163,693.18		236,439.96
250 Unemployment Compensation	833.87	2,056.23		2,890.10
260 Workers' Compensation	1,500.15	3,407.48		4,907.63
Total Personnel Services – Employee Benefits	\$163,273.64	\$350,758.30		\$514,031.94
300 Purchased Professional and Technical Services				
310 Official / Administrative Services		379.00		379.00
Total Purchased Professional and Technical Services		\$379.00		\$379.00
400 Purchased Property Services				
430 Repairs and Maintenance Services	1,000.00			1,000.00
440 Rentals	689.32	680.46		1,369.78
Total Purchased Property Services	\$1,689.32	\$680.46		\$2,369.78
500 Other Purchased Services				
530 Communications	38.75	139.07		177.82
580 Travel	2,859.60	12,991.32		15,850.92
Total Other Purchased Services	\$2,898.35	\$13,130.39		\$16,028.74
600 Supplies				
610 General Supplies	21,534.60	35,629.33		57,163.93
640 Books and Periodicals	1,169.00	296.25		1,465.25
650 Supplies & Fees – Technology Related	13,943.00			13,943.00
Total Supplies	\$36,646.60	\$35,925.58		\$72,572.18
700 Property				
752 Capital Equipment – Original and Additional	5,385.81			5,385.81
Total Property	\$5,385.81			\$5,385.81
800 Other Objects				
810 Dues and Fees	1,254.00	3,261.93		4,515.93
Total Other Objects	\$1,254.00	\$3,261.93		\$4,515.93
Total 2380 Office of the Principal Services	\$433,974.23	\$897,982.83		\$1,331,957.06

REVISED SUBMISSION

General Fund (10)

2390 Other Administration Services

Elementary

Secondary

Federal

Total

300 Purchased Professional and Technical Services

310 Official / Administrative Services

10,863.75

Total Purchased Professional and Technical Services

\$10,863.75

800 Other Objects

810 Dues and Fees

2,925.15

Total Other Objects

\$2,925.15

Total 2390 Other Administration Services

\$13,788.90

General Fund (10)

2400 Support Services – Pupil Health

Elementary

Secondary

Federal

Total

100 Personnel Services – Salaries

100 Personnel Services – Salaries

145,993.97

Total Personnel Services – Salaries

\$145,993.97

200 Personnel Services – Employee Benefits

210 Group Insurance – Contracted Provider

39,821.25

220 Social Security Contributions

9,883.35

230 PSERS Retirement Contributions

46,972.79

250 Unemployment Compensation

754.73

260 Workers' Compensation

948.92

Total Personnel Services – Employee Benefits

\$98,381.04

300 Purchased Professional and Technical Services

310 Official / Administrative Services

9,800.00

Total Purchased Professional and Technical Services

\$9,800.00

500 Other Purchased Services

580 Travel

85.44

Total Other Purchased Services

\$85.44

600 Supplies

610 General Supplies

2,270.43

Total Supplies

\$2,270.43

Total 2400 Support Services – Pupil Health

\$256,530.88

General Fund (10)

2440 Nursing Services

Elementary

Secondary

Federal

Total

100 Personnel Services – Salaries

100 Personnel Services – Salaries

145,993.97

Total Personnel Services – Salaries

\$145,993.97

200 Personnel Services – Employee Benefits

210 Group Insurance – Contracted Provider

39,821.25

220 Social Security Contributions

9,883.35

230 PSERS Retirement Contributions

46,972.79

250 Unemployment Compensation

754.73

260 Workers' Compensation

948.92

Total Personnel Services – Employee Benefits

\$98,381.04

300 Purchased Professional and Technical Services

310 Official / Administrative Services

9,800.00

Total Purchased Professional and Technical Services

\$9,800.00

500 Other Purchased Services

580 Travel

85.44

Total Other Purchased Services

\$85.44

600 Supplies

610 General Supplies

2,270.43

Total Supplies

\$2,270.43

Total 2440 Nursing Services

\$256,530.88

General Fund (10)

2500 Support Services – Business

Elementary

Secondary

Federal

Total

100 Personnel Services – Salaries

100 Personnel Services – Salaries

202,134.22

Total Personnel Services – Salaries

\$202,134.22

200 Personnel Services – Employee Benefits

210 Group Insurance – Contracted Provider

54,845.25

220 Social Security Contributions

15,293.23

230 PSERS Retirement Contributions

66,207.44

250 Unemployment Compensation

1,283.19

260 Workers' Compensation

1,369.44

299 All Other Employee Benefits

787.45

Total Personnel Services – Employee Benefits

\$139,786.00

300 Purchased Professional and Technical Services

310 Official / Administrative Services

27,447.00

Total Purchased Professional and Technical Services

\$27,447.00

400 Purchased Property Services

430 Repairs and Maintenance Services

1,824.00

Total Purchased Property Services

\$1,824.00

500 Other Purchased Services

530 Communications

919.05

580 Travel

706.48

Total Other Purchased Services

\$1,625.53

600 Supplies

610 General Supplies

5,922.88

650 Supplies & Fees – Technology Related

2,215.00

Total Supplies

\$8,137.88

800 Other Objects

810 Dues and Fees

3,074.02

Total Other Objects

\$3,074.02

Total 2500 Support Services – Business

\$384,028.65

General Fund (10)

2510 Fiscal Services

Elementary

Secondary

Federal

Total

100 Personnel Services – Salaries

100 Personnel Services – Salaries

202,134.22

Total Personnel Services – Salaries

\$202,134.22

200 Personnel Services – Employee Benefits

210 Group Insurance – Contracted Provider

54,845.25

220 Social Security Contributions

15,293.23

230 PSERS Retirement Contributions

66,207.44

250 Unemployment Compensation

1,283.19

260 Workers' Compensation

1,369.44

299 All Other Employee Benefits

787.45

Total Personnel Services – Employee Benefits

\$139,786.00

300 Purchased Professional and Technical Services

310 Official / Administrative Services

27,447.00

Total Purchased Professional and Technical Services

\$27,447.00

400 Purchased Property Services

430 Repairs and Maintenance Services

1,824.00

Total Purchased Property Services

\$1,824.00

500 Other Purchased Services

530 Communications

919.05

580 Travel

706.48

Total Other Purchased Services

\$1,625.53

600 Supplies

610 General Supplies

5,922.88

650 Supplies & Fees – Technology Related

2,215.00

Total Supplies

\$8,137.88

800 Other Objects

810 Dues and Fees

3,074.02

Total Other Objects

\$3,074.02

Total 2510 Fiscal Services

\$384,028.65

General Fund (10)

2511 Supervision of Fiscal Services - Head of Component

Elementary Secondary Federal Total

100 Personnel Services – Salaries				
100 Personnel Services – Salaries				71,105.31
Total Personnel Services – Salaries				\$71,105.31
200 Personnel Services – Employee Benefits				
210 Group Insurance – Contracted Provider				10,203.13
220 Social Security Contributions				5,827.48
230 PSERS Retirement Contributions				25,918.70
250 Unemployment Compensation				202.78
260 Workers' Compensation				512.77
299 All Other Employee Benefits				787.45
Total Personnel Services – Employee Benefits				\$43,452.31
300 Purchased Professional and Technical Services				
310 Official / Administrative Services				27,447.00
Total Purchased Professional and Technical Services				\$27,447.00
400 Purchased Property Services				
430 Repairs and Maintenance Services				1,824.00
Total Purchased Property Services				\$1,824.00
500 Other Purchased Services				
530 Communications				919.05
580 Travel				706.48
Total Other Purchased Services				\$1,625.53
600 Supplies				
610 General Supplies				5,922.88
650 Supplies & Fees – Technology Related				2,215.00
Total Supplies				\$8,137.88
800 Other Objects				
810 Dues and Fees				3,074.02
Total Other Objects				\$3,074.02
Total 2511 Supervision of Fiscal Services - Head of Component				\$156,666.05

General Fund (10)

2513 Receiving and Disbursing Funds Services

Elementary

Secondary

Federal

Total

100 Personnel Services – Salaries

100 Personnel Services – Salaries

31,930.00

Total Personnel Services – Salaries

\$31,930.00

200 Personnel Services – Employee Benefits

210 Group Insurance – Contracted Provider

18,844.93

220 Social Security Contributions

2,194.61

230 PSERS Retirement Contributions

10,399.71

250 Unemployment Compensation

199.99

260 Workers' Compensation

211.39

Total Personnel Services – Employee Benefits

\$31,850.63

Total 2513 Receiving and Disbursing Funds Services

\$63,780.63

General Fund (10)

2514 Payroll Services

Elementary

Secondary

Federal

Total

100 Personnel Services – Salaries

100 Personnel Services – Salaries

42,037.76

Total Personnel Services – Salaries

\$42,037.76

200 Personnel Services – Employee Benefits

210 Group Insurance – Contracted Provider

14,683.37

220 Social Security Contributions

3,034.67

230 PSERS Retirement Contributions

11,905.37

250 Unemployment Compensation

377.31

260 Workers' Compensation

273.23

Total Personnel Services – Employee Benefits

\$30,273.95

Total 2514 Payroll Services

\$72,311.71

General Fund (10)

2515 Financial Accounting Services

Elementary

Secondary

Federal

Total

100 Personnel Services – Salaries

100 Personnel Services – Salaries

42,418.63

Total Personnel Services – Salaries

\$42,418.63

200 Personnel Services – Employee Benefits

210 Group Insurance – Contracted Provider

11,113.82

220 Social Security Contributions

3,116.30

230 PSERS Retirement Contributions

13,225.19

250 Unemployment Compensation

293.99

260 Workers' Compensation

276.88

Total Personnel Services – Employee Benefits

\$28,026.18

Total 2515 Financial Accounting Services

\$70,444.81

General Fund (10)

2519 Other Fiscal Services

Elementary

Secondary

Federal

Total

100 Personnel Services – Salaries

100 Personnel Services – Salaries

14,642.52

Total Personnel Services – Salaries

\$14,642.52

200 Personnel Services – Employee Benefits

220 Social Security Contributions

1,120.17

230 PSERS Retirement Contributions

4,758.47

250 Unemployment Compensation

209.12

260 Workers' Compensation

95.17

Total Personnel Services – Employee Benefits

\$6,182.93

Total 2519 Other Fiscal Services

\$20,825.45

General Fund (10)

2600 Operation and Maintenance of Plant Services

Elementary

Secondary

Federal

Total

100 Personnel Services – Salaries

100 Personnel Services – Salaries 524,356.00

Total Personnel Services – Salaries \$524,356.00

200 Personnel Services – Employee Benefits

210 Group Insurance – Contracted Provider 181,136.83

220 Social Security Contributions 38,109.49

230 PSERS Retirement Contributions 143,736.05

250 Unemployment Compensation 4,023.91

260 Workers' Compensation 3,410.24

Total Personnel Services – Employee Benefits \$370,416.52

300 Purchased Professional and Technical Services

310 Official / Administrative Services 30,452.24

Total Purchased Professional and Technical Services \$30,452.24

400 Purchased Property Services

410 Cleaning Services 18,327.10

420 Utility Services 49,758.58

430 Repairs and Maintenance Services 64,073.56

440 Rentals 9,834.15

Total Purchased Property Services \$141,993.39

500 Other Purchased Services

522 Automotive Liability Insurance 19,262.00

523 General Property and Liability Insurance 58,414.00

529 Other Insurance 7,649.00

530 Communications 15,224.46

580 Travel 100.00

Total Other Purchased Services \$100,649.46

600 Supplies

610 General Supplies 49,733.27 90,172.66 139,905.93

620 Energy 350,608.65

Total Supplies \$49,733.27 \$90,172.66 \$490,514.58

700 Property

752 Capital Equipment – Original and Additional 1,070.70

Total Property \$1,070.70

800 Other Objects

810 Dues and Fees 1,566.00

Total Other Objects \$1,566.00

Total 2600 Operation and Maintenance of Plant Services \$49,733.27 \$90,172.66 \$1,661,018.89

LEA : 117414203 Loyalsock Township SD

Printed 3/1/2019 2:33:38 PM

REVISED SUBMISSION

Page - 30 of 47

General Fund (10)

2610 Supervision of Operation and Maintenance of Plant Services

Elementary

Secondary

Federal

Total

100 Personnel Services – Salaries

100 Personnel Services – Salaries

53,759.03

Total Personnel Services – Salaries**\$53,759.03****200 Personnel Services – Employee Benefits**

210 Group Insurance – Contracted Provider

19,674.59

220 Social Security Contributions

3,855.52

230 PSERS Retirement Contributions

16,923.45

250 Unemployment Compensation

200.01

260 Workers' Compensation

349.42

Total Personnel Services – Employee Benefits**\$41,002.99****300 Purchased Professional and Technical Services**

310 Official / Administrative Services

30,452.24

Total Purchased Professional and Technical Services**\$30,452.24****400 Purchased Property Services**

410 Cleaning Services

18,327.10

420 Utility Services

49,758.58

430 Repairs and Maintenance Services

64,073.56

440 Rentals

9,834.15

Total Purchased Property Services**\$141,993.39****500 Other Purchased Services**

522 Automotive Liability Insurance

19,262.00

523 General Property and Liability Insurance

58,414.00

529 Other Insurance

7,649.00

530 Communications

15,224.46

580 Travel

100.00

Total Other Purchased Services**\$100,649.46****600 Supplies**

610 General Supplies

49,713.41

90,132.94

139,846.35

620 Energy

350,608.65

Total Supplies**\$49,713.41****\$90,132.94****\$490,455.00****700 Property**

752 Capital Equipment – Original and Additional

1,070.70

Total Property**\$1,070.70****800 Other Objects**

810 Dues and Fees

1,566.00

Total Other Objects**\$1,566.00****Total 2610 Supervision of Operation and Maintenance of Plant Services****\$49,713.41****\$90,132.94****\$860,948.81**

General Fund (10)

2611 Supervision of Operation and Maintenance of Plant Services – Head of Component

<u>Elementary</u>	<u>Secondary</u>	<u>Federal</u>	<u>Total</u>
-------------------	------------------	----------------	--------------

100	<u>Personnel Services – Salaries</u>			
	100 Personnel Services – Salaries			53,759.03
Total Personnel Services – Salaries				\$53,759.03
200	<u>Personnel Services – Employee Benefits</u>			
	210 Group Insurance – Contracted Provider			19,674.59
	220 Social Security Contributions			3,855.52
	230 PSERS Retirement Contributions			16,923.45
	250 Unemployment Compensation			200.01
	260 Workers' Compensation			349.42
Total Personnel Services – Employee Benefits				\$41,002.99
300	<u>Purchased Professional and Technical Services</u>			
	310 Official / Administrative Services			30,452.24
Total Purchased Professional and Technical Services				\$30,452.24
400	<u>Purchased Property Services</u>			
	410 Cleaning Services			18,327.10
	420 Utility Services			49,758.58
	430 Repairs and Maintenance Services			64,073.56
	440 Rentals			9,834.15
Total Purchased Property Services				\$141,993.39
500	<u>Other Purchased Services</u>			
	522 Automotive Liability Insurance			19,262.00
	523 General Property and Liability Insurance			58,414.00
	529 Other Insurance			7,649.00
	530 Communications			15,224.46
	580 Travel			100.00
Total Other Purchased Services				\$100,649.46
600	<u>Supplies</u>			
	610 General Supplies	49,713.41	90,132.94	139,846.35
	620 Energy			350,608.65
Total Supplies		\$49,713.41	\$90,132.94	\$490,455.00
700	<u>Property</u>			
	752 Capital Equipment – Original and Additional			1,070.70
Total Property				\$1,070.70
800	<u>Other Objects</u>			
	810 Dues and Fees			1,566.00
Total Other Objects				\$1,566.00
Total 2611 Supervision of Operation and Maintenance of Plant Services – Head of Component		\$49,713.41	\$90,132.94	\$860,948.81

General Fund (10)

	<u>Elementary</u>	<u>Secondary</u>	<u>Federal</u>	<u>Total</u>
2620 Operation of Buildings Services				
100 Personnel Services – Salaries				
100 Personnel Services – Salaries				278,723.27
Total Personnel Services – Salaries				\$278,723.27
200 Personnel Services – Employee Benefits				
210 Group Insurance – Contracted Provider				106,427.05
220 Social Security Contributions				20,293.06
230 PSERS Retirement Contributions				88,325.70
250 Unemployment Compensation				2,836.79
260 Workers' Compensation				1,813.54
Total Personnel Services – Employee Benefits				\$219,696.14
Total 2620 Operation of Buildings Services				\$498,419.41

REVISED SUBMISSION

General Fund (10)

2630 Care and Upkeep of Grounds Services

Elementary

Secondary

Federal

Total

100 Personnel Services – Salaries

100 Personnel Services – Salaries

47,065.33

Total Personnel Services – Salaries

\$47,065.33

200 Personnel Services – Employee Benefits

210 Group Insurance – Contracted Provider

27,173.02

220 Social Security Contributions

3,277.68

230 PSERS Retirement Contributions

14,284.14

250 Unemployment Compensation

200.00

260 Workers' Compensation

305.89

Total Personnel Services – Employee Benefits

\$45,240.73

Total 2630 Care and Upkeep of Grounds Services

\$92,306.06

General Fund (10)

2640 Care and Upkeep of Equipment Services

Elementary

Secondary

Federal

Total

100 Personnel Services – Salaries

100 Personnel Services – Salaries

74,624.37

Total Personnel Services – Salaries

\$74,624.37

200 Personnel Services – Employee Benefits

210 Group Insurance – Contracted Provider

27,862.17

220 Social Security Contributions

5,314.12

230 PSERS Retirement Contributions

24,202.76

250 Unemployment Compensation

400.01

260 Workers' Compensation

485.15

Total Personnel Services – Employee Benefits

\$58,264.21

Total 2640 Care and Upkeep of Equipment Services

\$132,888.58

General Fund (10)

2660 Safety and Security Services

Elementary

Secondary

Federal

Total

100 Personnel Services – Salaries

100 Personnel Services – Salaries

70,184.00

Total Personnel Services – Salaries

\$70,184.00

200 Personnel Services – Employee Benefits

220 Social Security Contributions

5,369.11

250 Unemployment Compensation

387.10

260 Workers' Compensation

456.24

Total Personnel Services – Employee Benefits

\$6,212.45

600 Supplies

610 General Supplies

19.86

39.72

59.58

Total Supplies

\$19.86

\$39.72

\$59.58

Total 2660 Safety and Security Services

\$19.86

\$39.72

\$76,456.03

General Fund (10)

2700 Student Transportation Services

Elementary

Secondary

Federal

Total

100 Personnel Services – Salaries

100 Personnel Services – Salaries

221,460.07

Total Personnel Services – Salaries

\$221,460.07

200 Personnel Services – Employee Benefits

210 Group Insurance – Contracted Provider

21,183.56

220 Social Security Contributions

16,691.58

230 PSERS Retirement Contributions

58,909.08

250 Unemployment Compensation

2,289.61

260 Workers' Compensation

1,439.72

Total Personnel Services – Employee Benefits

\$100,513.55

300 Purchased Professional and Technical Services

310 Official / Administrative Services

2,383.73

Total Purchased Professional and Technical Services

\$2,383.73

400 Purchased Property Services

430 Repairs and Maintenance Services

33,504.06

440 Rentals

49.50

Total Purchased Property Services

\$33,553.56

500 Other Purchased Services

515 Public Carriers

5,369.12

516 Student Transportation Services From the IU

6,189.79

Total Other Purchased Services

\$11,558.91

600 Supplies

610 General Supplies

4,993.43

620 Energy

51,023.35

Total Supplies

\$56,016.78

800 Other Objects

810 Dues and Fees

391.00

Total Other Objects

\$391.00

Total 2700 Student Transportation Services

\$425,877.60

General Fund (10)

2710 Supervision of Student Transportation Services

Elementary

Secondary

Federal

Total

100 Personnel Services – Salaries

100 Personnel Services – Salaries 70,400.36

Total Personnel Services – Salaries \$70,400.36

200 Personnel Services – Employee Benefits

210 Group Insurance – Contracted Provider 19,893.52

220 Social Security Contributions 5,159.39

230 PSERS Retirement Contributions 22,289.98

250 Unemployment Compensation 199.99

260 Workers' Compensation 457.61

Total Personnel Services – Employee Benefits \$48,000.49

300 Purchased Professional and Technical Services

310 Official / Administrative Services 2,383.73

Total Purchased Professional and Technical Services \$2,383.73

400 Purchased Property Services

430 Repairs and Maintenance Services 32,349.06

440 Rentals 49.50

Total Purchased Property Services \$32,398.56

500 Other Purchased Services

515 Public Carriers 5,369.12

516 Student Transportation Services From the IU 6,189.79

Total Other Purchased Services \$11,558.91

600 Supplies

610 General Supplies 4,993.43

620 Energy 51,023.35

Total Supplies \$56,016.78

800 Other Objects

810 Dues and Fees 391.00

Total Other Objects \$391.00

Total 2710 Supervision of Student Transportation Services \$221,149.83

General Fund (10)

2711 Supervision of Student Transportation Services – Head of Component

Elementary Secondary Federal Total

100 Personnel Services – Salaries				
100 Personnel Services – Salaries				70,400.36
Total Personnel Services – Salaries				\$70,400.36
200 Personnel Services – Employee Benefits				
210 Group Insurance – Contracted Provider				19,893.52
220 Social Security Contributions				5,159.39
230 PSERS Retirement Contributions				22,289.98
250 Unemployment Compensation				199.99
260 Workers' Compensation				457.61
Total Personnel Services – Employee Benefits				\$48,000.49
300 Purchased Professional and Technical Services				
310 Official / Administrative Services				2,383.73
Total Purchased Professional and Technical Services				\$2,383.73
400 Purchased Property Services				
430 Repairs and Maintenance Services				32,349.06
440 Rentals				49.50
Total Purchased Property Services				\$32,398.56
500 Other Purchased Services				
515 Public Carriers				5,369.12
516 Student Transportation Services From the IU				6,189.79
Total Other Purchased Services				\$11,558.91
600 Supplies				
610 General Supplies				4,993.43
620 Energy				51,023.35
Total Supplies				\$56,016.78
800 Other Objects				
810 Dues and Fees				391.00
Total Other Objects				\$391.00
Total 2711 Supervision of Student Transportation Services – Head of Component				\$221,149.83

General Fund (10)

2720 Vehicle Operation Services

Elementary

Secondary

Federal

Total

100 Personnel Services – Salaries

100 Personnel Services – Salaries

151,059.71

Total Personnel Services – Salaries

\$151,059.71

200 Personnel Services – Employee Benefits

210 Group Insurance – Contracted Provider

1,290.04

220 Social Security Contributions

11,532.19

230 PSERS Retirement Contributions

36,619.10

250 Unemployment Compensation

2,089.62

260 Workers' Compensation

982.11

Total Personnel Services – Employee Benefits

\$52,513.06

Total 2720 Vehicle Operation Services

\$203,572.77

REVISED SUBMISSION

General Fund (10)

2750 Nonpublic Transportation

Elementary

Secondary

Federal

Total

400 Purchased Property Services

430 Repairs and Maintenance Services

1,155.00

Total Purchased Property Services

\$1,155.00

Total 2750 Nonpublic Transportation

\$1,155.00

General Fund (10)

2800 Support Services – Central

Elementary

Secondary

Federal

Total

100 Personnel Services – Salaries

100 Personnel Services – Salaries

101,670.62

Total Personnel Services – Salaries

\$101,670.62

200 Personnel Services – Employee Benefits

210 Group Insurance – Contracted Provider

33,664.54

220 Social Security Contributions

7,892.39

230 PSERS Retirement Contributions

35,416.55

240 Tuition Reimbursement

3,016.00

250 Unemployment Compensation

400.02

260 Workers' Compensation

722.58

Total Personnel Services – Employee Benefits

\$81,112.08

Total 2800 Support Services – Central

\$182,782.70

General Fund (10)

2820 Information Services

Elementary

Secondary

Federal

Total

100 Personnel Services – Salaries

100 Personnel Services – Salaries

101,670.62

Total Personnel Services – Salaries

\$101,670.62

200 Personnel Services – Employee Benefits

210 Group Insurance – Contracted Provider

33,664.54

220 Social Security Contributions

7,892.39

230 PSERS Retirement Contributions

35,416.55

250 Unemployment Compensation

400.02

260 Workers' Compensation

722.58

Total Personnel Services – Employee Benefits

\$78,096.08

Total 2820 Information Services

\$179,766.70

General Fund (10)

2821 Supervision of Information Services

Elementary

Secondary

Federal

Total

100 Personnel Services – Salaries

100 Personnel Services – Salaries

101,670.62

Total Personnel Services – Salaries

\$101,670.62

200 Personnel Services – Employee Benefits

210 Group Insurance – Contracted Provider

33,664.54

220 Social Security Contributions

7,892.39

230 PSERS Retirement Contributions

35,416.55

250 Unemployment Compensation

400.02

260 Workers' Compensation

722.58

Total Personnel Services – Employee Benefits

\$78,096.08

Total 2821 Supervision of Information Services

\$179,766.70

REVISED SUBMISSION

General Fund (10)

2830 Staff Services

Elementary

Secondary

Federal

Total

200 Personnel Services – Employee Benefits

240 Tuition Reimbursement

3,016.00

Total Personnel Services – Employee Benefits

\$3,016.00

Total 2830 Staff Services

\$3,016.00

REVISED SUBMISSION

General Fund (10)

2834 Staff Development Services – Non-Instructional, Certified Staff Only

Elementary

Secondary

Federal

Total

200 Personnel Services – Employee Benefits

240 Tuition Reimbursement

3,016.00

Total Personnel Services – Employee Benefits

\$3,016.00

Total 2834 Staff Development Services – Non-Instructional, Certified Staff Only

\$3,016.00

REVISED SUBMISSION

General Fund (10)

2900 Other Support Services

600 Supplies

610 General Supplies

	<u>Elementary</u>	<u>Secondary</u>	<u>Federal</u>	<u>Total</u>
Total Supplies				1,050.00
Total 2900 Other Support Services				\$1,050.00

REVISED SUBMISSION

General Fund (10)

2910 Support Services Not Listed Elsewhere In the 2000 Series

Elementary

Secondary

Federal

Total

600 Supplies

610 General Supplies

1,050.00

Total Supplies

\$1,050.00

Total 2910 Support Services Not Listed Elsewhere In the 2000 Series

\$1,050.00

General Fund (10)

3000 Operation of Non-Instructional Services

Total

100 Personnel Services – Salaries

100 Personnel Services – Salaries 286,016.16

Total Personnel Services – Salaries

\$286,016.16

200 Personnel Services – Employee Benefits

210 Group Insurance – Contracted Provider 71.30

220 Social Security Contributions 21,682.69

230 PSERS Retirement Contributions 62,206.90

250 Unemployment Compensation 3,949.97

260 Workers' Compensation 1,857.65

Total Personnel Services – Employee Benefits

\$89,768.51

300 Purchased Professional and Technical Services

310 Official / Administrative Services 95,038.83

340 Technical Services 28,554.00

Total Purchased Professional and Technical Services

\$123,592.83

400 Purchased Property Services

430 Repairs and Maintenance Services 7,533.05

440 Rentals 3,010.00

Total Purchased Property Services

\$10,543.05

500 Other Purchased Services

510 Student Transportation Services 1,728.00

520 Insurance – General 25,727.00

530 Communications 3,656.76

550 Printing and Binding 8,138.69

580 Travel 18,560.37

Total Other Purchased Services

\$57,810.82

600 Supplies

610 General Supplies 55,986.75

Total Supplies

\$55,986.75

700 Property

752 Capital Equipment – Original and Additional 1,695.00

Total Property

\$1,695.00

800 Other Objects

810 Dues and Fees 22,585.57

Total Other Objects

\$22,585.57

Total 3000 Operation of Non-Instructional Services

\$647,998.69

General Fund (10)

3200 Student Activities

Elementary

Secondary

Federal

Total

100 Personnel Services – Salaries

100 Personnel Services – Salaries

235,792.33

Total Personnel Services – Salaries

\$235,792.33

200 Personnel Services – Employee Benefits

220 Social Security Contributions

17,839.47

230 PSERS Retirement Contributions

48,467.93

250 Unemployment Compensation

3,156.14

260 Workers' Compensation

1,531.09

Total Personnel Services – Employee Benefits

\$70,994.63

300 Purchased Professional and Technical Services

310 Official / Administrative Services

76,588.97

340 Technical Services

28,554.00

Total Purchased Professional and Technical Services

\$105,142.97

400 Purchased Property Services

430 Repairs and Maintenance Services

7,533.05

440 Rentals

3,010.00

Total Purchased Property Services

\$10,543.05

500 Other Purchased Services

510 Student Transportation Services

1,728.00

520 Insurance – General

25,727.00

580 Travel

18,560.37

Total Other Purchased Services

\$46,015.37

600 Supplies

610 General Supplies

55,986.75

Total Supplies

\$55,986.75

700 Property

752 Capital Equipment – Original and Additional

1,695.00

Total Property

\$1,695.00

800 Other Objects

810 Dues and Fees

22,585.57

Total Other Objects

\$22,585.57

Total 3200 Student Activities

\$548,755.67

General Fund (10)

3300 Community Services

Elementary

Secondary

Federal

Total

100 Personnel Services – Salaries

100 Personnel Services – Salaries

50,223.83

Total Personnel Services – Salaries

\$50,223.83

200 Personnel Services – Employee Benefits

210 Group Insurance – Contracted Provider

71.30

220 Social Security Contributions

3,843.22

230 PSERS Retirement Contributions

13,738.97

250 Unemployment Compensation

793.83

260 Workers' Compensation

326.56

Total Personnel Services – Employee Benefits

\$18,773.88

300 Purchased Professional and Technical Services

310 Official / Administrative Services

18,449.86

Total Purchased Professional and Technical Services

\$18,449.86

500 Other Purchased Services

530 Communications

3,656.76

550 Printing and Binding

8,138.69

Total Other Purchased Services

\$11,795.45

Total 3300 Community Services

\$99,243.02

REVISED SUBMISSION

General Fund (10)

5000 Other Expenditures and Financing Uses

Total

800 Other Objects

830 Interest	12,002.00
880 Refunds of Prior Years' Receipts	(63.64)

Total Other Objects	\$11,938.36
----------------------------	--------------------

900 Other Uses of Funds

910 Redemption of Principal	235,965.48
930 Fund Transfers	2,229,448.00
932 Capital Reserve Fund Transfers Applicable To Fund 32	500,000.00

Total Other Uses of Funds	\$2,965,413.48
----------------------------------	-----------------------

Total 5000 Other Expenditures and Financing Uses	\$2,977,351.84
---	-----------------------

REVISED SUBMISSION

General Fund (10)

5100 Debt Service / Other Expenditures and Financing Uses	<u>Elementary</u>	<u>Secondary</u>	<u>Federal</u>	<u>Total</u>
800 Other Objects				
830 Interest				12,002.00
880 Refunds of Prior Years' Receipts				(63.64)
Total Other Objects				\$11,938.36
900 Other Uses of Funds				
910 Redemption of Principal				235,965.48
Total Other Uses of Funds				\$235,965.48
Total 5100 Debt Service / Other Expenditures and Financing Uses				\$247,903.84

REVISED SUBMISSION

General Fund (10)

5110 Debt Service

Elementary

Secondary

Federal

Total

800 Other Objects

830 Interest

12,002.00

Total Other Objects

\$12,002.00

900 Other Uses of Funds

910 Redemption of Principal

235,965.48

Total Other Uses of Funds

\$235,965.48

Total 5110 Debt Service

\$247,967.48

REVISED SUBMISSION

General Fund (10)

5130 Refund of Prior Year Revenues / Receipts

Elementary

Secondary

Federal

Total

800 Other Objects

880 Refunds of Prior Years' Receipts

(63.64)

Total Other Objects

(\$63.64)

Total 5130 Refund of Prior Year Revenues / Receipts

(\$63.64)

REVISED SUBMISSION

General Fund (10)

5200 Interfund Transfers – Out

Elementary

Secondary

Federal

Total

900 Other Uses of Funds

930 Fund Transfers

2,229,448.00

932 Capital Reserve Fund Transfers Applicable To Fund 32

500,000.00

Total Other Uses of Funds

\$2,729,448.00

Total 5200 Interfund Transfers – Out

\$2,729,448.00

REVISED SUBMISSION

General Fund (10)

5230 Capital Projects Fund Transfers

Elementary

Secondary

Federal

Total

900 Other Uses of Funds

932 Capital Reserve Fund Transfers Applicable To Fund 32

500,000.00

Total Other Uses of Funds

\$500,000.00

Total 5230 Capital Projects Fund Transfers

\$500,000.00

REVISED SUBMISSION

General Fund (10)

5240 Debt Service Fund Transfers

Elementary

Secondary

Federal

Total

900 Other Uses of Funds

930 Fund Transfers

2,229,448.00

Total Other Uses of Funds

\$2,229,448.00

Total 5240 Debt Service Fund Transfers

\$2,229,448.00

REVISED SUBMISSION

Capital Reserve Fund - § 1431 (32)

2000 Support Services

700 Property

752 Capital Equipment – Original and Additional

Total

29,618.59

Total Property

\$29,618.59

Total 2000 Support Services

\$29,618.59

REVISED SUBMISSION

Capital Reserve Fund - § 1431 (32)

2300 Support Services – Administration

700 Property

752 Capital Equipment – Original and Additional

Total Property

Total 2300 Support Services – Administration

Elementary

Secondary

Federal

Total

5,766.89

5,766.89

\$5,766.89

\$5,766.89

\$5,766.89

\$5,766.89

REVISED SUBMISSION

Capital Reserve Fund - § 1431 (32)

2380 Office of the Principal Services

700 Property

752 Capital Equipment – Original and Additional

Total Property

Total 2380 Office of the Principal Services

Elementary

Secondary

Federal

Total

5,766.89

5,766.89

\$5,766.89

\$5,766.89

\$5,766.89

\$5,766.89

LEA : 117414203 Loyalsock Township SD

Printed 3/1/2019 2:33:42 PM

REVISED SUBMISSION

Capital Reserve Fund - § 1431 (32)

2600 Operation and Maintenance of Plant Services

Elementary

Secondary

Federal

Total

700 Property

752 Capital Equipment – Original and Additional

23,851.70

Total Property				\$23,851.70
Total 2600 Operation and Maintenance of Plant Services				\$23,851.70

REVISED SUBMISSION

Capital Reserve Fund - § 1431 (32)

2620 Operation of Buildings Services

Elementary

Secondary

Federal

Total

700 Property

752 Capital Equipment – Original and Additional

23,851.70

Total Property

\$23,851.70

Total 2620 Operation of Buildings Services

\$23,851.70

REVISED SUBMISSION

Capital Reserve Fund - § 1431 (32)

4000 Facilities Acquisition, Construction and Improvement Services

Total

400 Purchased Property Services

450 Construction Services

554,277.07

490 Other Purchased Property Services

50.00

Total Purchased Property Services

\$554,327.07

700 Property

710 Land and Improvements

19,567.00

720 Buildings

11,750.00

Total Property

\$31,317.00

Total 4000 Facilities Acquisition, Construction and Improvement Services

\$585,644.07

REVISED SUBMISSION

Capital Reserve Fund - § 1431 (32)

4200 Existing Site Improvement Services

Elementary

Secondary

Federal

Total

400 Purchased Property Services

450 Construction Services

550,427.07

Total Purchased Property Services

\$550,427.07

700 Property

710 Land and Improvements

19,567.00

Total Property

\$19,567.00

Total 4200 Existing Site Improvement Services

\$569,994.07

REVISED SUBMISSION

Capital Reserve Fund - § 1431 (32)

4500 Building Acquisition and Construction Services – Original and Additional

Elementary

Secondary

Federal

Total

400 Purchased Property Services

490 Other Purchased Property Services

50.00

Total Purchased Property Services

\$50.00

700 Property

720 Buildings

11,750.00

Total Property

\$11,750.00

Total 4500 Building Acquisition and Construction Services – Original and Additional

\$11,800.00

LEA : 117414203 Loyalsock Township SD

Printed 3/1/2019 2:33:49 PM

REVISED SUBMISSION

Capital Reserve Fund - § 1431 (32)

4600 Existing Building Improvement Services

Elementary

Secondary

Federal

Total

400 Purchased Property Services

450 Construction Services

3,850.00

Total Purchased Property Services

\$3,850.00

Total 4600 Existing Building Improvement Services

\$3,850.00

REVISED SUBMISSION

Other Capital Projects Fund (39)

3000 Operation of Non-Instructional Services

700 Property

752 Capital Equipment – Original and Additional

Total

51,461.00

Total Property **\$51,461.00**

Total 3000 Operation of Non-Instructional Services **\$51,461.00**

REVISED SUBMISSION

Other Capital Projects Fund (39)

3200 Student Activities

Elementary

Secondary

Federal

Total

700 Property

752 Capital Equipment – Original and Additional

51,461.00

Total Property

\$51,461.00

Total 3200 Student Activities

\$51,461.00

Other Capital Projects Fund (39)

4000 Facilities Acquisition, Construction and Improvement Services

Total

300 Purchased Professional and Technical Services

330 Other Professional Services 34,118.06

Total Purchased Professional and Technical Services

\$34,118.06

400 Purchased Property Services

450 Construction Services 229,590.00

490 Other Purchased Property Services 692.50

Total Purchased Property Services

\$230,282.50

700 Property

720 Buildings 78,571.02

Total Property

\$78,571.02

Total 4000 Facilities Acquisition, Construction and Improvement Services

\$342,971.58

Other Capital Projects Fund (39)

4300 Architecture and Engineering Services / Educational Specifications Development – Original and Additional

Elementary

Secondary

Federal

Total

300 Purchased Professional and Technical Services

330 Other Professional Services

4,670.00

Total Purchased Professional and Technical Services

\$4,670.00

Total 4300 Architecture and Engineering Services / Educational Specifications Development – Original and Additional

\$4,670.00

REVISED SUBMISSION

Other Capital Projects Fund (39)

4400 Architecture and Engineering Services / Educational Specifications – Improvements

Elementary

Secondary

Federal

Total

300 Purchased Professional and Technical Services

330 Other Professional Services

29,448.06

Total Purchased Professional and Technical Services

\$29,448.06

Total 4400 Architecture and Engineering Services / Educational Specifications – Improvements

\$29,448.06

REVISED SUBMISSION

Other Capital Projects Fund (39)

4500 Building Acquisition and Construction Services – Original and Additional

Elementary

Secondary

Federal

Total

700 Property

720 Buildings

78,571.02

Total Property

\$78,571.02

Total 4500 Building Acquisition and Construction Services – Original and Additional

\$78,571.02

REVISED SUBMISSION

Other Capital Projects Fund (39)

4600 Existing Building Improvement Services

Elementary

Secondary

Federal

Total

400 Purchased Property Services

450 Construction Services

229,590.00

490 Other Purchased Property Services

692.50

Total Purchased Property Services

\$230,282.50

Total 4600 Existing Building Improvement Services

\$230,282.50

REVISED SUBMISSION

Debt Service Fund (40)

2000 Support Services

800 Other Objects

810 Dues and Fees

114,605.89

Total Other Objects

\$114,605.89

Total 2000 Support Services

\$114,605.89

REVISED SUBMISSION

Debt Service Fund (40)

2300 Support Services – Administration

Elementary

Secondary

Federal

Total

800 Other Objects

810 Dues and Fees

114,605.89

Total Other Objects

\$114,605.89

Total 2300 Support Services – Administration

\$114,605.89

REVISED SUBMISSION

Debt Service Fund (40)

2390 Other Administration Services

Elementary

Secondary

Federal

Total

800 Other Objects

810 Dues and Fees

114,605.89

Total Other Objects

\$114,605.89

Total 2390 Other Administration Services

\$114,605.89

REVISED SUBMISSION

Debt Service Fund (40)

5000 Other Expenditures and Financing Uses

Total

800 Other Objects

830 Interest 440,918.75

Total Other Objects \$440,918.75

900 Other Uses of Funds

910 Redemption of Principal 9,145,000.00

Total Other Uses of Funds \$9,145,000.00

Total 5000 Other Expenditures and Financing Uses \$9,585,918.75

REVISED SUBMISSION

Debt Service Fund (40)

5100 Debt Service / Other Expenditures and Financing Uses	<u>Elementary</u>	<u>Secondary</u>	<u>Federal</u>	<u>Total</u>
800 Other Objects				
830 Interest				440,918.75
Total Other Objects				\$440,918.75
900 Other Uses of Funds				
910 Redemption of Principal				9,145,000.00
Total Other Uses of Funds				\$9,145,000.00
Total 5100 Debt Service / Other Expenditures and Financing Uses				\$9,585,918.75

REVISED SUBMISSION

Debt Service Fund (40)

5110 Debt Service

Elementary

Secondary

Federal

Total

800 Other Objects

830 Interest

440,918.75

Total Other Objects

\$440,918.75

900 Other Uses of Funds

910 Redemption of Principal

1,805,000.00

Total Other Uses of Funds

\$1,805,000.00

Total 5110 Debt Service

\$2,245,918.75

REVISED SUBMISSION

Debt Service Fund (40)

5120 Debt Service – Refunded Bonds

Elementary

Secondary

Federal

Total

900 Other Uses of Funds

910 Redemption of Principal

7,340,000.00

Total Other Uses of Funds

\$7,340,000.00

Total 5120 Debt Service – Refunded Bonds

\$7,340,000.00

	<u>General Fund(10)</u>	<u>Public Purpose Trust(27)</u>	<u>Other Compt Approved (28)</u>	<u>Athletic / Activity(29)</u>	<u>Capital Reserve (690. 1850)(31)</u>
1000 Instruction					
1100 Regular Programs - Elementary / Secondary	9,110,794.69				
1200 Special Programs - Elementary / Secondary	2,825,116.18				
1300 Vocational Education	609,457.12				
1400 Other Instructional Programs - Elementary / Secondary	422,898.74				
1700 Higher Education Programs for Secondary Students	500.00				
Total Instruction	\$12,968,766.73				
2000 Support Services					
2100 Support Services - Students	845,344.90				
2200 Support Services - Instructional Staff	545,240.46				
2300 Support Services - Administration	1,889,481.78				
2400 Support Services - Pupil Health	256,530.88				
2500 Support Services - Business	384,028.65				
2600 Operation and Maintenance of Plant Services	1,661,018.89				
2700 Student Transportation Services	425,877.60				
2800 Support Services - Central	182,782.70				
2900 Other Support Services	1,050.00				
Total Support Services	\$6,191,355.86				
3000 Operation of Non-Instructional Services					
3200 Student Activities	548,755.67				
3300 Community Services	99,243.02				
Total Operation of Non-Instructional Services	\$647,998.69				
4000 Facilities Acquisition, Construction and Improvement Services					
4200 Existing Site Improvement Services					
4300 Architecture and Engineering Services / Educational Specifications Development - Original and Additional					
4400 Architecture and Engineering Services / Educational Specifications - Improvements					
4500 Building Acquisition and Construction Services - Original and Additional					
4600 Existing Building Improvement Services					
Total Facilities Acquisition, Construction and Improvement Services					
5000 Other Expenditures and Financing Uses					
5100 Debt Service / Other Expenditures and Financing Uses	247,903.84				
5200 Interfund Transfers - Out	2,729,448.00				
Total Other Expenditures and Financing Uses	\$2,977,351.84				
TOTAL ACTUAL EXPENDITURES & OTHER FINANCING USES	\$22,785,473.12				

REVISED SUBMISSION

	<u>Capital Reserve (1431)(32)</u>	<u>Other Capital Projects Fund(39)</u>	<u>Debt Service(40)</u>	<u>Permanent(90)</u>	<u>Total</u>
1000 Instruction					
1100 Regular Programs - Elementary / Secondary					9,110,794.69
1200 Special Programs - Elementary / Secondary					2,825,116.18
1300 Vocational Education					609,457.12
1400 Other Instructional Programs - Elementary / Secondary					422,898.74
1700 Higher Education Programs for Secondary Students					500.00
Total Instruction					\$12,968,766.73
2000 Support Services					
2100 Support Services - Students					845,344.90
2200 Support Services - Instructional Staff					545,240.46
2300 Support Services - Administration	5,766.89		114,605.89		2,009,854.56
2400 Support Services - Pupil Health					256,530.88
2500 Support Services - Business					384,028.65
2600 Operation and Maintenance of Plant Services	23,851.70				1,684,870.59
2700 Student Transportation Services					425,877.60
2800 Support Services - Central					182,782.70
2900 Other Support Services					1,050.00
Total Support Services	\$29,618.59		\$114,605.89		\$6,335,580.34
3000 Operation of Non-Instructional Services					
3200 Student Activities		51,461.00			600,216.67
3300 Community Services					99,243.02
Total Operation of Non-Instructional Services		\$51,461.00			\$699,459.69
4000 Facilities Acquisition, Construction and Improvement Services					
4200 Existing Site Improvement Services	569,994.07				569,994.07
4300 Architecture and Engineering Services / Educational Specifications Development - Original and Additional		4,670.00			4,670.00
4400 Architecture and Engineering Services / Educational Specifications - Improvements		29,448.06			29,448.06
4500 Building Acquisition and Construction Services - Original and Additional	11,800.00	78,571.02			90,371.02
4600 Existing Building Improvement Services	3,850.00	230,282.50			234,132.50
Total Facilities Acquisition, Construction and Improvement Services	\$585,644.07	\$342,971.58			\$928,615.65
5000 Other Expenditures and Financing Uses					
5100 Debt Service / Other Expenditures and Financing Uses			9,585,918.75		9,833,822.59
5200 Interfund Transfers - Out					2,729,448.00
Total Other Expenditures and Financing Uses			\$9,585,918.75		\$12,563,270.59
TOTAL ACTUAL EXPENDITURES & OTHER FINANCING USES	\$615,262.66	\$394,432.58	\$9,700,524.64		\$33,495,693.00

PSERS Salary Data (Salary Data should relate to the General Fund only)

Amount Description	Amount
Total Salary Base for salaries subject to PSERS withholding	9,363,568.33
Total Federally Funded salaries subject to PSERS withholding	206,933.10
	<hr/>

Title I Expenditure Data

Amount Description	Amount
Expenditures Funded with Current Title I Funds	287,675.00
Expenditures Funded with Carry over Title I Funds	59,744.00
	<hr/>
Total Title I Expenditure Data	\$347,419.00
	<hr/>

Benefits for Staff Relative to Collective Bargaining Agreements

	OBJECT	COVERED	NOT COVERED	TOTAL
10 General Fund				
	211 Medical Insurance	1,656,247.65	277,440.56	1,933,688.21
	212 Dental Insurance	47,281.25	6,264.00	53,545.25
	215 Eye Care Insurance			
	216 Prescription Insurance			
	271 Self-Insurance Medical Benefits		58,296.29	58,296.29
	272 Self-Insurance Dental Benefits		1,276.00	1,276.00
	275 Self-Insurance Eye Care Benefits			
	276 Self-Insurance Prescription Benefits			
	FUND TOTAL		\$1,703,528.90	\$343,276.85
50 Enterprise Fund	No Self Insurance data to report			
	211 Medical Insurance			
	212 Dental Insurance			
	215 Eye Care Insurance			
	216 Prescription Insurance			
	271 Self-Insurance Medical Benefits			
	272 Self-Insurance Dental Benefits			
	275 Self-Insurance Eye Care Benefits			
	276 Self-Insurance Prescription Benefits			
	FUND TOTAL			
60 Internal Service Fund	No Self Insurance data to report			
	211 Medical Insurance			
	212 Dental Insurance			
	215 Eye Care Insurance			
	216 Prescription Insurance			
	271 Self-Insurance Medical Benefits			
	272 Self-Insurance Dental Benefits			
	275 Self-Insurance Eye Care Benefits			
	276 Self-Insurance Prescription Benefits			
	FUND TOTAL			
Total of All Funds		\$1,703,528.90	\$343,276.85	\$2,046,805.75

LEA : 117414203 Loyalsock Township SD

Printed 3/1/2019 2:34:05 PM

REVISED SUBMISSION

Page - 1 of 1

Function	Special Education (Prior Year)	Nonspecial Education (Prior Year)	Total (Prior Year)	Special Education (Current Year)	Nonspecial Education (Current Year)	Total (Current Year)
2120 Guidance Services	285,533.67	285,533.67	571,067.34	275,782.96	275,782.96	551,565.92
2140 Psychological Services	62,995.10	62,995.10	125,990.20	44,054.75	44,054.75	88,109.50
2150 Speech Pathology and Audiology Services						
2160 Social Work Services						
2260 Instruction and Curriculum Development Services	15,446.94	87,532.65	102,979.59	16,594.29	94,034.28	110,628.57
2350 Legal and Accounting Services	898.81	17,077.48	17,976.29	768.87	14,608.44	15,377.31
2420 Medical Services						
2440 Nursing Services	35,990.47	203,946.02	239,936.49	38,479.63	218,051.25	256,530.88
2700 Student Transportation Services	61,566.16	348,874.90	410,441.06	63,881.64	361,995.96	425,877.60
Total	\$462,431.15	\$1,005,959.82	\$1,468,390.97	\$439,562.14	\$1,008,527.64	\$1,448,089.78

REVISED SUBMISSION

(PRINCIPAL AMOUNTS ONLY)

GOVERNMENTAL FUNDS/ ACTIVITIES

	Short-Term Borrowing	General Obligation Bonds/Notes	Authority Building Obligations	Other Long-Term Debt	Other Post-Employment Benefits (OPEB)	Compensated Absences	Net Pension Liability	Total
1. Debt at Beginning of Fiscal Year		20,110,000.00		418,987.00	2,703,614.00	58,555.33	34,874,388.00	58,165,544.33
2. Additional Debt Incurred During Year		7,375,000.00		5,386.00	95,964.00	11,270.28		7,487,620.28
3. Retirements and Repayments		9,145,000.00		234,010.00	125,389.00	8,262.39	1,174,176.00	10,686,837.39
4. Debt at End of Fiscal Year		18,340,000.00		190,363.00	2,674,189.00	61,563.22	33,700,212.00	54,966,327.22
5. Accreted Interest at End Of Fiscal Year								
6. Total Debt and Accreted Interest		18,340,000.00		190,363.00	2,674,189.00	61,563.22	33,700,212.00	54,966,327.22
7. Current Portion P&I - Due within 1 year		2,329,667.50		171,354.00				2,501,021.50
8. Interest Paid during current fiscal year		426,173.33		12,002.00				438,175.33

(PRINCIPAL AMOUNTS ONLY)

PROPRIETARY FUNDS

	Short-Term Borrowing	General Obligation Bonds/Notes	Authority Building Obligations	Other Long-Term Debt	Other Post-Employment Benefits (OPEB)	Compensated Absences	Net Pension Liability	Total
1. Debt at Beginning of Fiscal Year				2,505.00	43,652.00		1,004,613.00	1,050,770.00
2. Additional Debt Incurred During Year								
3. Retirements and Repayments				577.00	3,611.00		33,824.00	38,012.00
4. Debt at End of Fiscal Year				1,928.00	40,041.00		970,789.00	1,012,758.00
5. Accreted Interest at End Of Fiscal Year								
6. Total Debt and Accreted Interest				1,928.00	40,041.00		970,789.00	1,012,758.00
7. Current Portion P&I - Due within 1 year				808.00				808.00
8. Interest Paid during current fiscal year				231.00				231.00

Total Principal and Interest Payments Made by Your School - All Funds

Function	Fund		Principal (910)	Principal (920)	Interest (830)	Total (Principal +Interest)	Misc Other Uses (990)
5110	10	General Fund	235,965.48		12,002.00	247,967.48	
5110	20	Special Revenue Funds					
5110	30	Capital Projects Funds					
5110	40	Debt Service Fund	1,805,000.00		440,918.75	2,245,918.75	
5110	90	Permanent Fund					
5120	10	General Fund					
5120	20	Special Revenue Funds					
5120	30	Capital Projects Funds					
5120	40	Debt Service Fund	7,340,000.00			7,340,000.00	
Total Debt Payments - Governmental Funds			\$9,380,965.48		\$452,920.75	\$9,833,886.23	

Function	Fund		Principal (910)	Principal (920)	Interest (830)	Total (Principal +Interest)
5110	50	Enterprise Fund				
5110	60	Internal Service Fund				
5120	50	Enterprise Fund				
5120	60	Internal Service Fund				
Total Debt Payments - Proprietary Funds						

REVISED SUBMISSION

Debt Details
Governmental Funds/ Activities

Debt Category	Debt Issue Date (MM/YYYY)	Principal Amounts Only				Current Portion Due Within One Year (Principal and Interest)	Interest Paid During Fiscal Year
		Debt at Beginning of Fiscal Year	Additions	Reductions / Repayments	Debt at End of Fiscal Year		
General Obligation Bonds/Notes – CIB	11/2017		7,375,000.00	15,000.00	7,360,000.00	207,400.00	65,708.33
General Obligation Bonds/Notes – CIB	08/2015	2,125,000.00		50,000.00	2,075,000.00	91,000.00	42,000.00
General Obligation Bonds/Notes – CIB	11/2014	5,185,000.00		5,000.00	5,180,000.00	130,217.50	125,317.50
General Obligation Bonds/Notes – CIB	08/2012	4,605,000.00		880,000.00	3,725,000.00	1,901,050.00	83,300.00
General Obligation Bonds/Notes – CIB	07/2012	7,340,000.00		7,340,000.00			88,472.50
General Obligation Bonds/Notes – CIB	08/2011	855,000.00		855,000.00			21,375.00
Other Long Term Debt/Liabilities		418,987.00	5,386.00	234,010.00	190,363.00	171,354.00	12,002.00
Compensated Absences		58,555.33	11,270.28	8,262.39	61,563.22		
Other Post-Employment Benefits (OPEB)		2,703,614.00	95,964.00	125,389.00	2,674,189.00		
Net Pension Liability		34,874,388.00		1,174,176.00	33,700,212.00		
Totals for Debt Entered:		\$58,165,544.33	\$7,487,620.28	\$10,686,837.39	\$54,966,327.22	\$2,501,021.50	\$438,175.33

Bond Details
Proprietary Funds

Debt Category	Debt Issue Date (MM/YYYY)	Principal Amounts Only				Current Portion Due Within One Year (Principal and Interest)	Interest Paid During Fiscal Year
		Debt at Beginning of Fiscal Year	Additions	Reductions / Repayments	Debt at End of Fiscal Year		
Other Long Term Debt/Liabilities		2,505.00		577.00	1,928.00	808.00	231.00
Other Post-Employment Benefits (OPEB)		43,652.00		3,611.00	40,041.00		
Net Pension Liability		1,004,613.00		33,824.00	970,789.00		
Totals for Debt Entered:		\$1,050,770.00		\$38,012.00	\$1,012,758.00	\$808.00	\$231.00

General Fund (10)

Section 1: Tuition/Purchased Services as Reported within Expenditure Detail

	Amount
Tuition Reported in General Fund Expenditures 1000-560	715,352.47
Purchased Services in General Fund Expenditures 1000-594 and 1000-597	11,601.16
Section 1 Total	\$726,953.63

Section 2: Tuition Paid to Institution Types During Fiscal Year

	Tuition Paid For Nonspecial Education	Tuition Paid For Special Education	Total
1 1306 Institutions			
2 Institutionalized Children's Programs			
3 Juveniles Incarcerated in Adult Facilities			
4 Residential Treatment Facilities	50,936.45		50,936.45
5 Other Local Education Agencies	20,449.63		20,449.63
6 Brick and Mortar Charter Schools			
7 Cyber Charter Schools	259,189.82	123,150.71	382,340.53
8 Career and Technology Centers	215,213.02		215,213.02
9 Approved Private Schools			
10 PA Chartered Schools for the Deaf and Blind			
11 Private Residential Rehabilitative Institutions	39,912.84		39,912.84
12 Juvenile Detention Centers			
13 Special Program Jointures	11,601.16		11,601.16
14 Other Tuition Not Included Elsewhere In This Section	6,500.00		6,500.00
Section 2 Total	\$603,802.92	\$123,150.71	\$726,953.63

REVISED SUBMISSION

1 .	<u>Student Transportation Services for Educational Field Trips</u>	7,425.92
2 .	<u>Student Transportation Services for Student Activities</u>	13,602.48
3 .	<u>Rental of Vehicles for Student Transportation Services</u>	
4 .	<u>Capital Reserve Funds</u>	

Include only district-owned transportation expenditures paid from State or local money.
 DO NOT include federal expenditures or payments to contract service providers.
 Contracted transportation services should not be recorded on this schedule.

Food Service / Cafeteria Operations Fund (51)

3000 Operation of Non-Instructional Services

Total

100 Personnel Services – Salaries

100 Personnel Services – Salaries 308,565.00

Total Personnel Services – Salaries \$308,565.00

200 Personnel Services – Employee Benefits

210 Group Insurance – Contracted Provider 60,211.00

220 Social Security Contributions 22,069.00

230 PSERS Retirement Contributions 107,174.00

250 Unemployment Compensation 3,703.00

260 Workers' Compensation 1,930.00

Total Personnel Services – Employee Benefits \$195,087.00

400 Purchased Property Services

430 Repairs and Maintenance Services 4,520.00

Total Purchased Property Services \$4,520.00

500 Other Purchased Services

580 Travel 3,279.00

Total Other Purchased Services \$3,279.00

600 Supplies

610 General Supplies 42,623.00

630 Food 456,706.00

Total Supplies \$499,329.00

700 Property

740 Depreciation 50,855.00

Total Property \$50,855.00

800 Other Objects

810 Dues and Fees 1,856.00

830 Interest 231.00

Total Other Objects \$2,087.00

Total 3000 Operation of Non-Instructional Services \$1,063,722.00

Food Service / Cafeteria Operations Fund (51)

3100 Food Services

Elementary Secondary Federal Total

100 Personnel Services – Salaries

100 Personnel Services – Salaries 308,565.00

Total Personnel Services – Salaries \$308,565.00

200 Personnel Services – Employee Benefits

210 Group Insurance – Contracted Provider 60,211.00

220 Social Security Contributions 22,069.00

230 PSERS Retirement Contributions 107,174.00

250 Unemployment Compensation 3,703.00

260 Workers' Compensation 1,930.00

Total Personnel Services – Employee Benefits \$195,087.00

400 Purchased Property Services

430 Repairs and Maintenance Services 4,520.00

Total Purchased Property Services \$4,520.00

500 Other Purchased Services

580 Travel 3,279.00

Total Other Purchased Services \$3,279.00

600 Supplies

610 General Supplies 42,623.00

630 Food 456,706.00

Total Supplies \$499,329.00

700 Property

740 Depreciation 50,855.00

Total Property \$50,855.00

800 Other Objects

810 Dues and Fees 1,856.00

830 Interest 231.00

Total Other Objects \$2,087.00

Total 3100 Food Services \$1,063,722.00

REVISED SUBMISSION

	<u>Food Service(51)</u>	<u>Child Care Operations(52)</u>	<u>Other Enterprise(58)</u>	<u>Internal Service(60)</u>	<u>Total</u>
3000 <u>Operation of Non-Instructional Services</u>					
3100 Food Services	1,063,722.00				1,063,722.00
Total Operation of Non-Instructional Services	\$1,063,722.00				\$1,063,722.00
TOTAL ACTUAL EXPENDITURES & OTHER FINANCING USES	\$1,063,722.00				\$1,063,722.00